



NANOSHIELD

Basic Application Guide

1) Introduction

Technology

- Nanoveu Film with Nanoshield summary

Products Type

- Nanoshield Poly Ethylene Terephthalate (PET) – Silicone Adhesive
- Nanoshield Poly Ethylene Terephthalate (PET) – Acrylic Adhesive

2) Preparation

- Basic Installation tools - Squeegee, Cutting Mat,  Pen knife and Steel Ruler.

3) Installing on Surfaces

Flat/Even surfaces

- Table/Counter Tops
- Monitor Displays
- Placemats

Irregular surfaces

- Door handles/Railings
- Lift Buttons

4) Notes

- Product care & maintenance

5) Disclaimers and copyrights

Introduction



Nanoveu Film

Nanoshield uses a special polymer surface coated with copper nanoparticles that viruses and bacteria cannot survive on. Within minutes of contact with Nanoshield Film, 99.9% of viruses and bacteria are killed and the self-disinfecting properties lasts up to 6 months. Please visit our website for more details.

Poly Ethylene Terephthalate (PET)

Polyethylene terephthalate commonly abbreviated **PET, PETE**, is the most common [thermoplastic polymer](#) resin of the [polyester](#) family and is used in [fibres](#) for clothing, [containers](#) for liquids and foods, [thermoforming](#) for manufacturing, and in combination with glass fibre for engineering [resins](#).

Source taken from https://en.wikipedia.org/wiki/Polyethylene_terephthalate

Adhesiveness

Nanoshield PET Silicone – Medium Adhesive and easy to handle, suitable to install on less frequently touched surfaces, screen displays product surfaces such as TVs, monitors, clocks...etc

Nanoshield PET Acrylic – Strong Adhesive, thicker and suitable for frequently touched surfaces such as tables, placemat, doors handles, remote controls, lift buttons...etc

Preparation

Basic Installations Tools



x1pc Squeegee
(Alternative: card or scraper)



x1pc Cutting Mat, x1pc ⚠ Pen knife and x1pc Steel Ruler

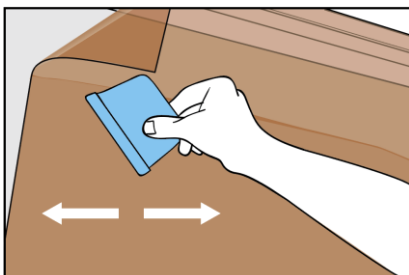
Installing on Flat/Even Surfaces

1) Table/Counter Tops

For best results, use
Nanoshield PET Acrylic on
Table/Counter Tops.

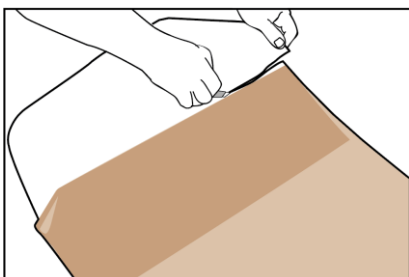
Step 1

Completely clean and dry the area completely that you want to install on. Lay the film on the area and adjust alignment accordingly. Apply the film with the squeegee, forming an angle of 45 degrees. Move the squeegee slowly from centre towards the edges of the film.



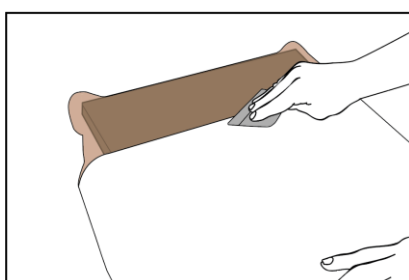
Step 2

Slowly cut off 5-7cm of the liner.



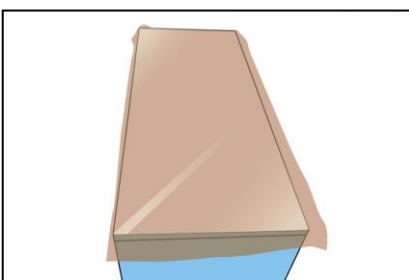
Step 3

Start the application of the film by applying slight pressure on the squeegee so as to secure film parallel while removing liner concurrently till it is removed completely.



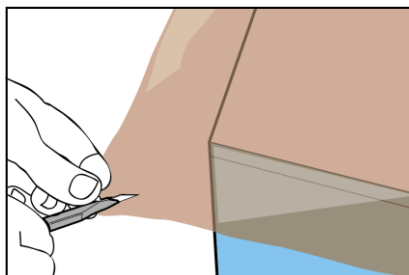
Step 4

Once the film is pasted completely, there will be excess around the edges of the table.



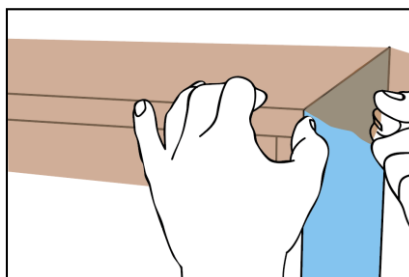
Step 5 ⚠

Diagonally cut the film using a penknife starting from the corner of the table.



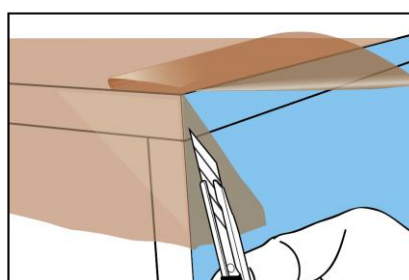
Step 6

Apply the film to one of the edges of the table by folding the film over the angle of the edge.



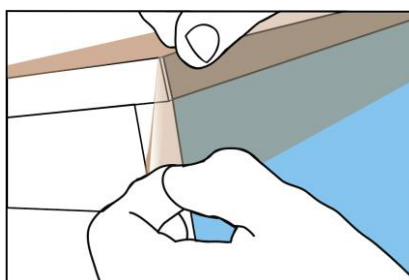
Step 7 ⚠

Cut the excess film using a penknife leaving approximately 1 mm - 2 mm from the edge, then cover the adjacent edge.



Step 8

Apply the film to the second edge and wrap the corner with a slight overlap of both films.

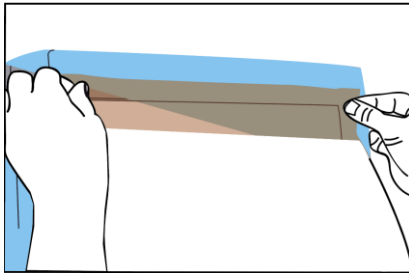


2) TV Screen/Monitor Display

For best results, use
Nanoshield PET Silicone on
TV Screen/Monitor Display.

Step 1

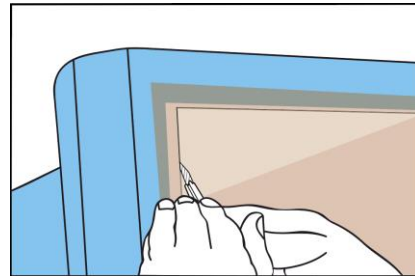
Completely clean and dry the area completely that you want to install on. Cut a rectangle slightly larger than the screen to be covered. Remove approximately 5-7 cm of the liner and stick the film on the edge of the screen.



Step 4

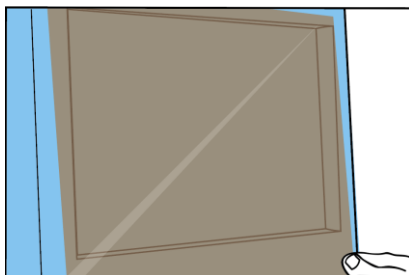
Cut the excess film using a penknife, following the edge of the screen.

! *Caution: too strong cutting pressure may result in substrate scratching. Nanoveu Pte Ltd cannot be held responsible for any damages and degradations caused to the substrate during film cutting. It is the responsibility of the installer to take all the necessary precautions during this operation.*



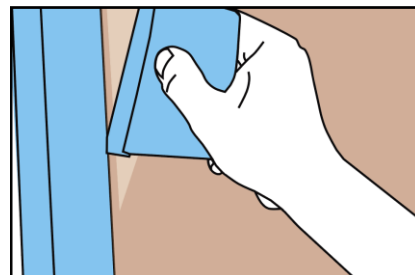
Step 2

Carefully remove the liner completely and position the film on the screen.



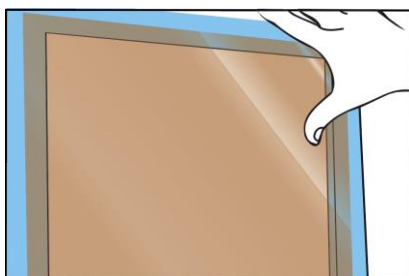
Step 5

To complete, apply the edges firmly with a squeegee.



Step 3

Start the application to the screen. Apply the film progressively. As you work on a transparent substrate, it is important to apply the film very evenly. This application can be carried out with a squeegee.

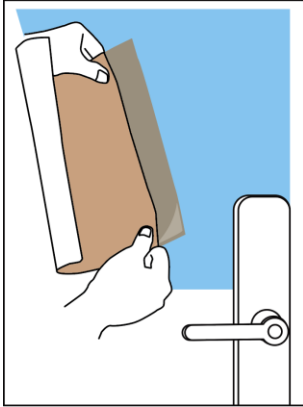


3) Door Push Plate

For best results, use Nanoshield PET Acrylic on Door Push Plate.

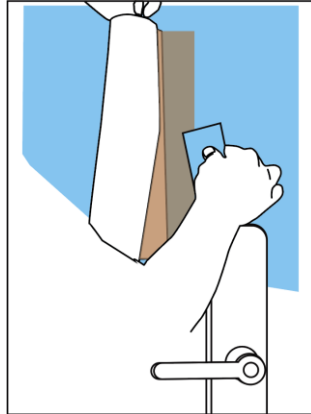
Step 1

Completely clean and dry the area that you want to install on. Remove approximately 5-7 cm of the liner and stick the film on the surface you intend to paste.



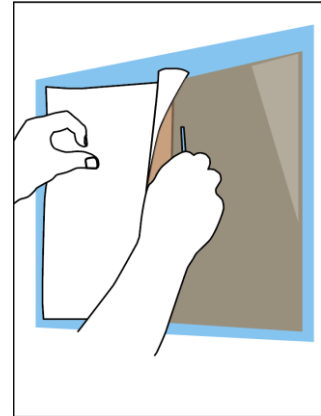
Step 2

Apply the film with the squeegee, forming an angle of 45 degrees. Move the squeegee slowly from centre towards the edges of the film.



Step 3

Continue step 2, and slowly remove the liner below with squeegee moving towards the edge to finish pasting.

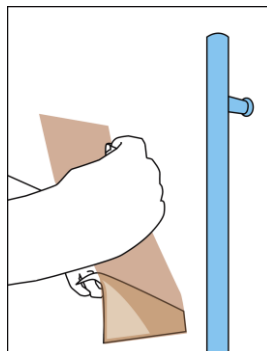
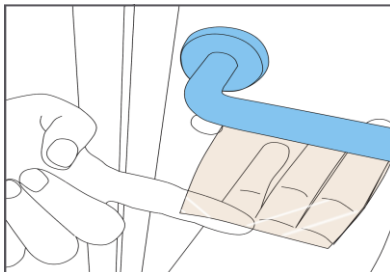


4) Door Handle/Railing

For best results, use Nanoshield PET Acrylic on Door Handle/Railings.

Step 1

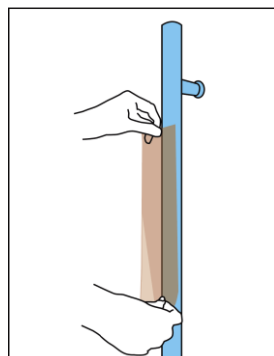
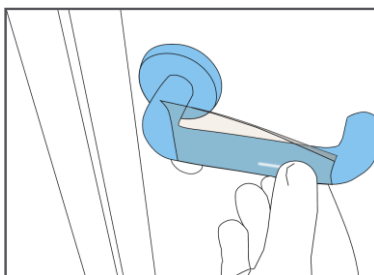
Completely clean and dry the area that you want to install on. Only the straight grip of the door handle needs to be protected with the antimicrobial film. Cut a rectangle of the film and remove the liner. Position the film starting on the underside of the handle, apply the film by hand to the rear side of the handle.



Step 2

Continue the film application wrapping all around the handle while moving with your hand from left to right/top to bottom, so as to properly apply the film to the full width of the handle.


! When wrapping the film on the handle, take note of the direction, the edge of the sticker cannot be against the hand motion when holding or turning the handle knob.

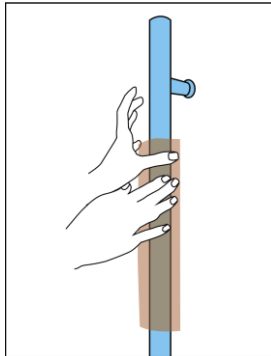
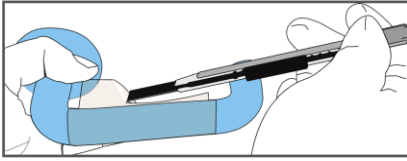


! Nanoveu Pte Ltd is not liable/responsible for any injury, or damage that may occur during the installation process.

Step 3

Finish with a small overlap (approx. 2 mm) with the other end of the film at the rear side of the handle.

 Cut the excess film using a penknife.



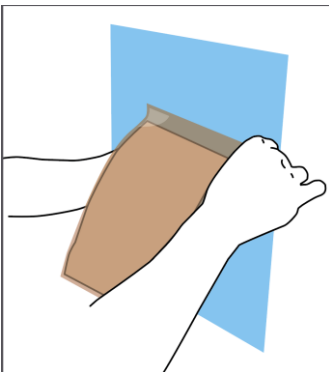
Irregular surfaces

5) Lift Button Panels

For best results, use Nanoshield PET Acrylic on Lift Button Panels.

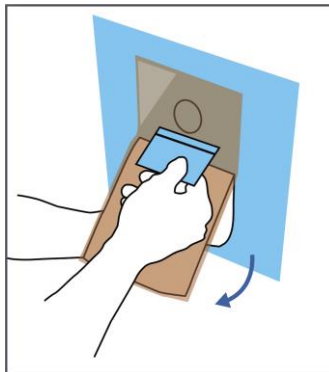
Step 1

Completely clean and dry the area that you want to install on. Only the panels with the buttons needs to be protected with the antimicrobial film. Cut a rectangle of the film and remove the liner. Position the film, start the application of the film.



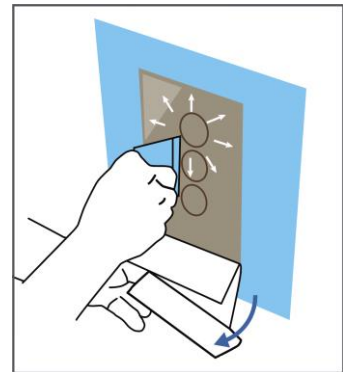
Step 2

Apply slight pressure vertically from left to right (either way) of the film with squeegee in between buttons, this is done repeatedly while removing the liner, by doing so it will secure the inner area of the film.



Step 3

Finish by apply slight pressure with continuous outward action to push out air or bubble and remove the liner completely.



Notes

When handling the film...

- 1) Do not use force while installing/handling the film as the films are thin materials, there might be chance of damaging it.
- 2) If the film is dirty, remove the dust or dirt with a clear tape/sticker by tapping it.
- 3) If unused, films must be kept clean at all times in a polybag or sleeve.
- 4) Avoid removal and pasting the film many times on the surface as this will reduce adhesiveness.
- 5) Avoid strong heat or fire near the film.

General Guide

- 6) The basic Installation guide is for general usage **only**.
- 7) Method of use and installation can be improvised and customised to suit individual.
- 8) Before installing the film, always clean and dry the surface.



NANOSHIELD

FB/Twitter/ - @Nanoveuofficial LinkedIn - Nanoveu Limited

Email us at info@nanoveu.com



All images and diagrams are for illustration purpose only.

All rights reserved. No part of this information may be reproduced, distributed, or transmitted in any form or by any means, including photocopying, recording, or other electronic or mechanical methods, without the prior written permission of Nanoveu Pte Ltd, except in the case of brief quotations embodied in critical reviews and certain other non commercial uses permitted by copyright law.