



# MEDIAZONE PRO & MULTI-HEAD PLAYER USER GUIDE

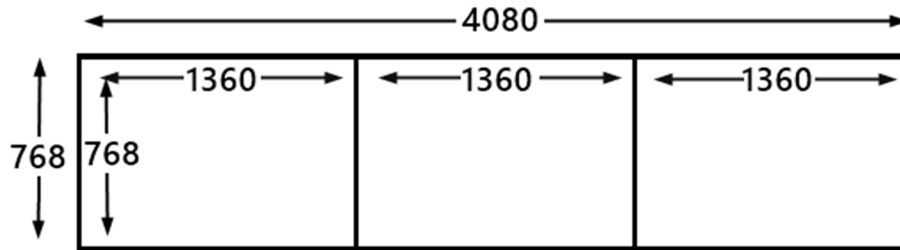
VERSION 1.1

August 2016

# MEDIAZONE & PRO MULTI-HEAD PLAYER USER GUIDE

## INTRODUCTION

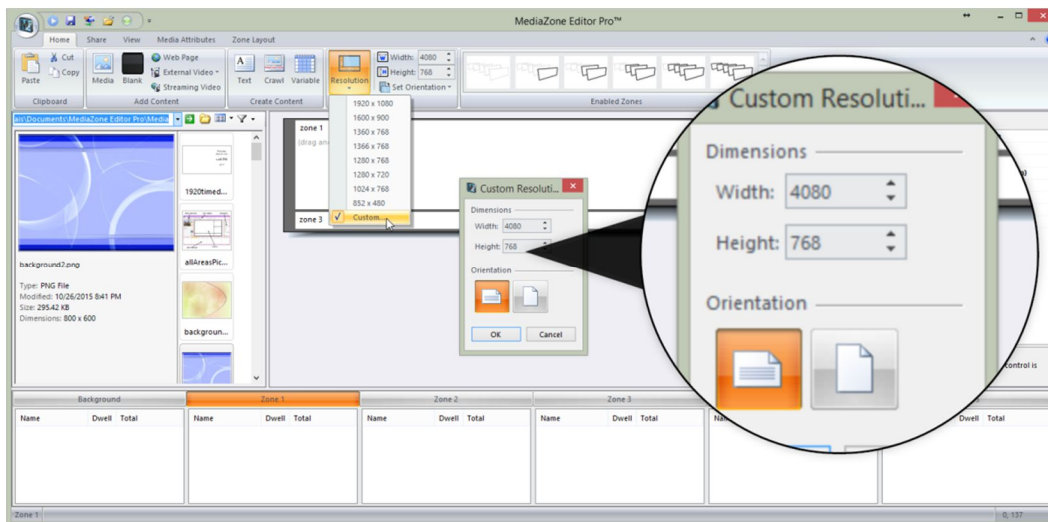
A multi-head player requires additional configurations to determine the resolution of the combined screens. Total resolution is the sum of the dimensions (width and height) of all screens in each direction. The image below illustrates how the total resolution is calculated of 3-screen players.



Total Height= 768  
Total Width = 4080  
(4080 = 1360 + 1360 + 1360)

## CREATING PLAYLISTS FOR 3-HEAD PLAYERS

The canvas area of the **MediaZone Pro Editor** sizes to match the resolution specified by a user when a new playlist is created. Regardless of how the screens are combined to show media, the total resolution must be communicated to a **MediaZone Pro Editor** so the canvas area can be sized appropriately.



Typically, media content on a video wall is arranged in one of two approaches:

- combining all screens to display one image or video
- displaying different media content on each screen

Both approaches may be utilized in one playlist if desired.

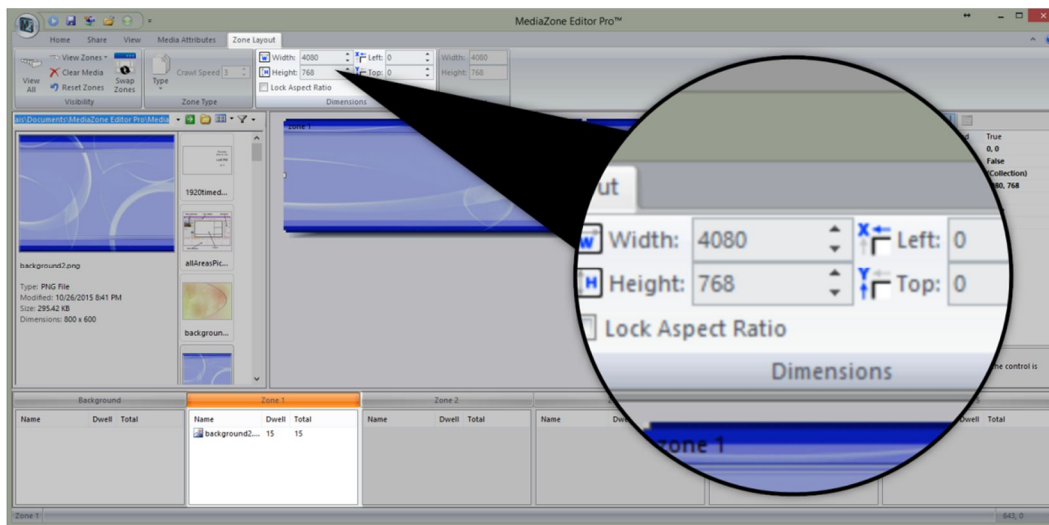
# MEDIAZONE & PRO MULTI-HEAD PLAYER USER GUIDE

## ZONE LAYOUT FOR 3-SCREEN PLAYERS

Zones hold the media content in a playlist, and it is the zones which determine where media content shows on the video wall. To create one large display that shows one image or video across all of the screens, one full screen sized zone must be created in the **MediaZone Pro Editor**. This zone will be the same size as the total resolution.

### TO COMBINE ALL SCREENS INTO ONE DISPLAY:

1. Select a zone, and set the **Left** and **Top** fields in the **Dimensions** area of the **Zone Layout** tab.
2. Set the width and height to match the width and height of the total resolution.



Once this playlist reaches the player, video card software will divide the media content into appropriate portions for each screen.

# MEDIAZONE & PRO MULTI-HEAD PLAYER USER GUIDE

## ZONE LAYOUT FOR 3-SCREEN PLAYERS (CONTINUED)

To display different media content on each screen, a zone must be created for each screen. The zone size will equal the resolution of a single screen. For example, three zones must be created in the **MediaZone Pro Editor** to display different content on each of the three screens that a part of one multi-head **MediaZone Pro Player**.

Each zone has a width of 1360 and a height of 768. Zone 2 is offset 1360 from the left, and zone 3 is offset from the left 2720 (1360 x 2).

### TO DISPLAY DIFFERENT MEDIA ON EACH SCREEN:

1. Select a zone, such as Zone 1, and set the **Left** and **Top** fields to zero. Set the **Width** field to 1360 and the **Height** field to 768.
2. Select another zone, such as Zone 2, and set the **Left** field to 1360 and the **Top** field to zero. Set the **Width** field to 1360 and the **Height** field to 768.
3. Select another zone, such as Zone 3, and set the **Left** field to 2720 and the **Top** field to zero. Set the **Width** field to 1360 and the **Height** field to 768.

