



MediaPOD-E QUICK START GUIDE

Shipment Packing List:

1. MediaPOD-E Player
2. 19V AC/DC External Power supply
3. Wi-Fi Antenna (Optional)
4. (4) VESA Mounting Screws (Optional)
5. MediaPOD-E Editor Install & Manual CD



TECHNICAL SUPPORT

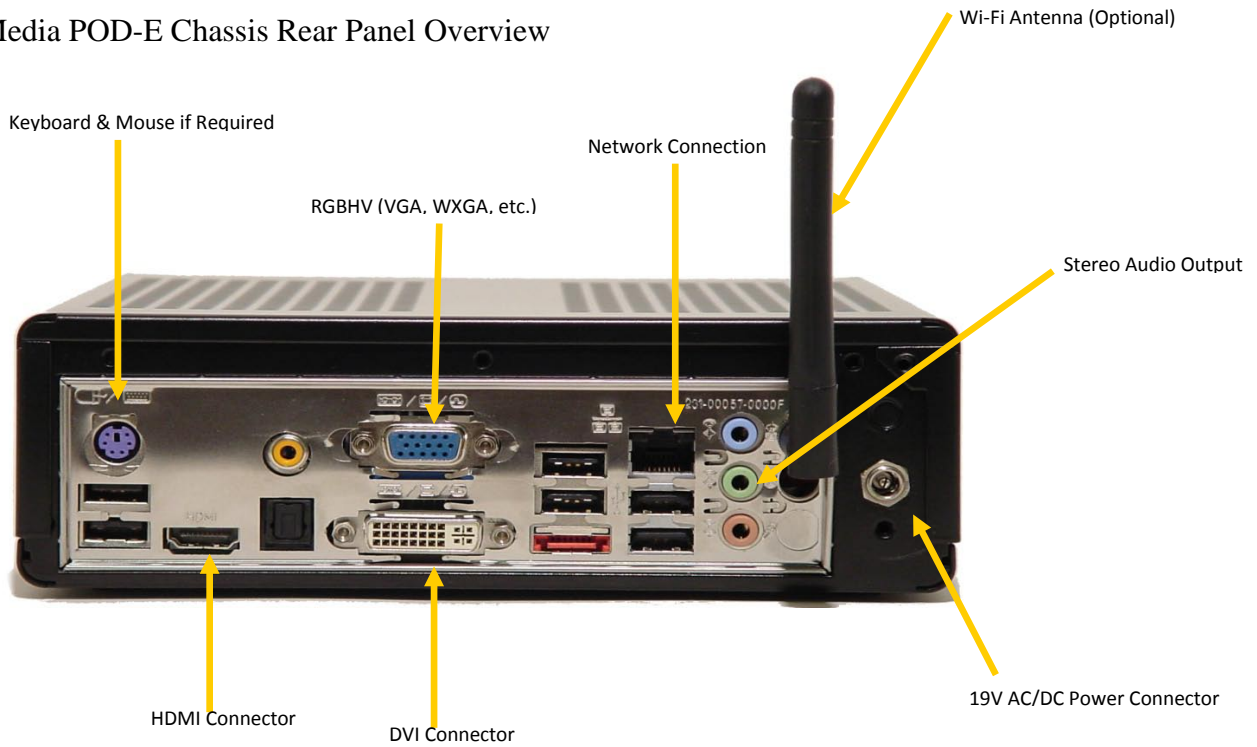
If you have any questions about any of the steps below, you can contact our technical support department.

United States Tech Support: Call	800-331-2019	800-331-2019 <i>press option 2</i>
Asia/Pacific Tech Support: Call	+65-3106-2499	+65-3106-2499
Other International Regions: Call	+1-913-492-4666	+1-913-492-4666 <i>press option 2</i>

Email E-mail Support: tech@keywesttechnology.com

CONNECTIONS

Media POD-E Chassis Rear Panel Overview



19V AC/DC External Power Supply



Connect the VGA cable from the LCD Monitor to the VGA connector on the back of the MediaPOD-E

Connect the power supply into the power supply connector on the back of the rear panel after you have connected the VGA cable to the back of the MediaPOD-E

After the VGA cable and the external power supply have been connected, the unit will start up and run the software automatically without further interaction. It will load and run the current playlist that was shipped with the unit. If a change is needed, follow the instructions below to change the content on the MediaPOD-E player.

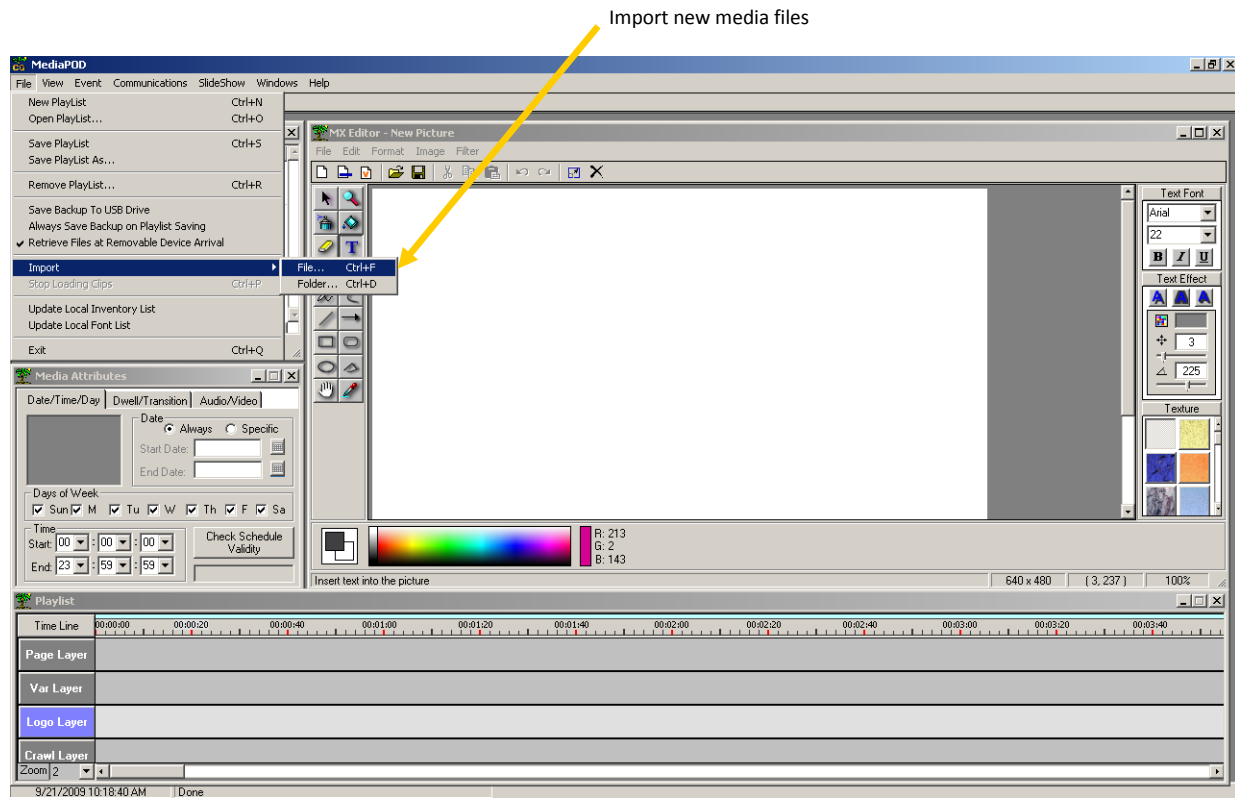
CHANGING CONTENT ON THE PLAYER

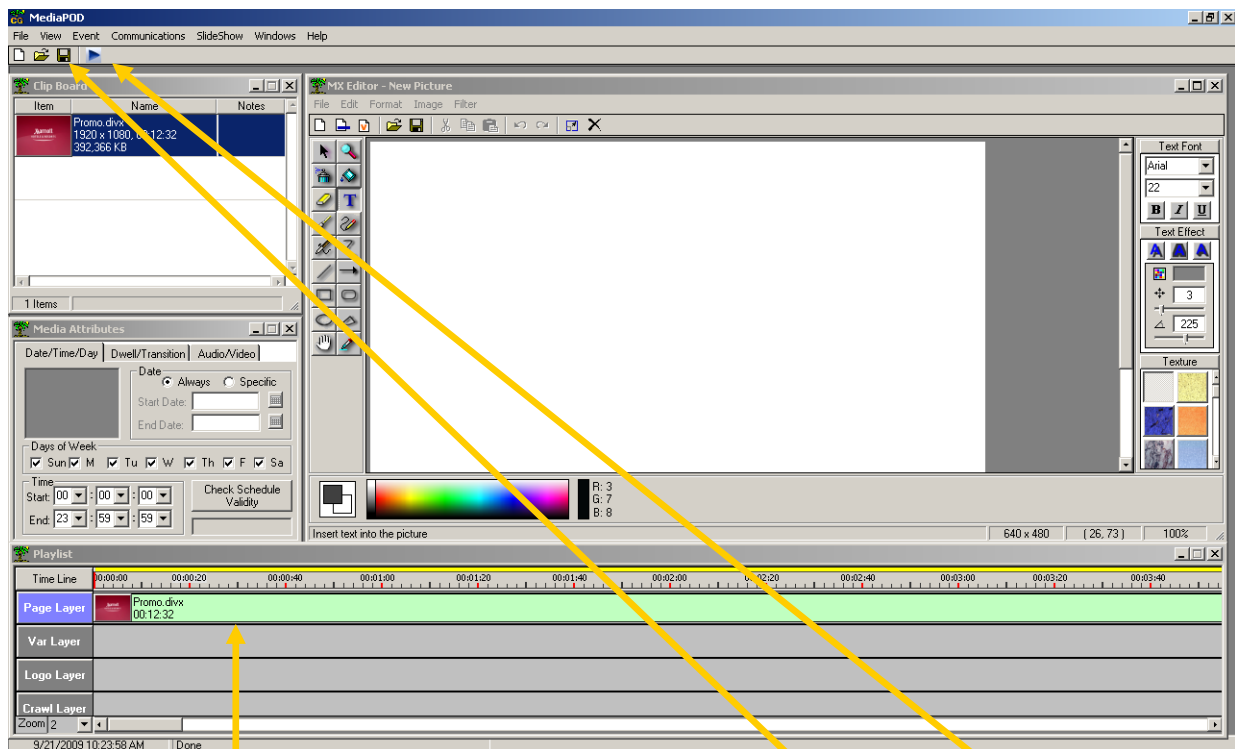
You will need a monitor, mouse and keyboard connected to the system in order to change any content. If you have the unit setup on your network, then you can use the MediaPOD-E Editor software to upload new content. If you do not have the unit connected to the network, then you can change the content on the unit itself by using the MediaPOD-E Editor software that is on the MediaPOD-E Player hardware.

Press the 'End' key on the keyboard to stop the presentation from being displayed. This will stop the current content from playing and bring you to the desktop of the MediaPOD-E. Once on the desktop, double click on the MediaPOD Editor Icon to open it up (See Icon Image Below)



After the MediaPOD-E software opens up, you will then need to import any new content that you want to be displayed. The import selection will bring open a Windows Explorer Browser for you to locate your media from a USB Pen drive or from the MediaPOD-E hard drive itself.





Before you drag the new video down to the Page Layer, you will need to right click on the previous video and select 'Remove Item'. Once the previous item has been removed, then you need to drag and drop the new video in the clipboard down into the Page Layer. Press the Save icon that is in the menu bar at the top of the software. After you have 'Saved' the new playlist, then you need to press the blue 'Play' button arrow in the menu bar at the top of the software.

Save Playlist

Play Button

Disconnect the mouse and keyboard to finish updating your MediaPOD-E.

TECHNICAL SUPPORT

If you have any questions about any of the steps above, you can contact our technical support department.

United States Tech Support: Call	800-331-2019	800-331-2019 <i>press option 2</i>
Asia/Pacific Tech Support: Call	+65-3106-2499	+65-3106-2499
Other International Regions: Call	+1-913-492-4666	+1-913-492-4666 <i>press option 2</i>

Email E-mail Support: tech@keywesttechnology.com