

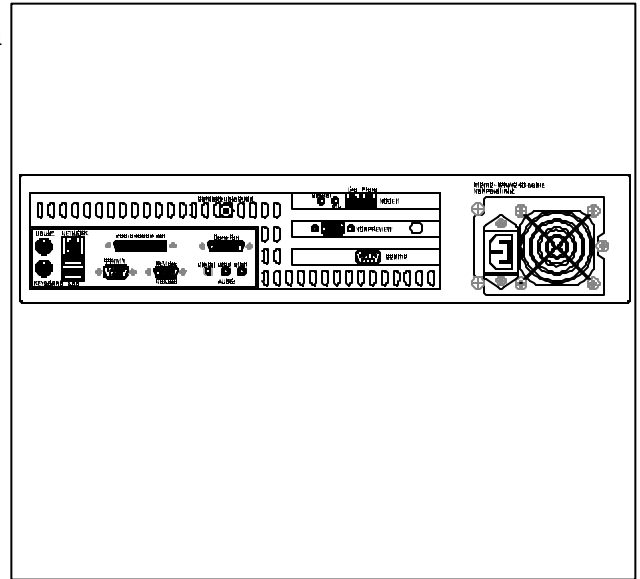
Table of Contents

Introduction	3
Connections	4
Operations	9
Store Presentations	10
Store Audio	13
Playback Tones	15
Playback Presentations	16
Presentation Hot Keys	17
Set Presentations & Tones	18
Presentation Slots	19
Audio Slots	20
GPI On/Off	20
Telephony & DTMF Setup	21
Pass Code	22
Level Settings	23
Auto-Answer	24
Dial-Up Control	24
Telephone Quick Reference Guide	25
DTMF Commands	26
Live Voice-Over	26
Clear DTMF Buffer	27
Audio Sources	28
Scheduler	29
Set Day-of-Week	30
Reset Day-Of-Week	32
Set Specific Date	33
Set System Clock/Date	34

Remote Control	34
IP Addresses	35
Remote Control Functions	36
Remote Maintenance Screen	37
Reprogram Slots	38
Reprogram Scheduler	38
Appendix A: Connect DEVIS to MHz RF-Switch	40
	(Courtesy Bruce Bradley)

Deployable Emergency Video Information System (DEVIS)

DEVIS is a mobile, computer based system used to display Microsoft PowerPoint™ Presentations over CCTV, CATV, or broadcast video lines and airwaves. The unit has two major modes of operation—displaying normal, user-designed, presentations and switching on user command to emergency presentations. DEVIS is capable of playing audio directly through it's line-in port, and overriding with emergency messages. It features telephone dual-tone multi-frequency (DTMF) control for switching presentations, switching audio source, recording messages, and playback of messages. The system is also controllable via Ethernet, making it a flexible device, accessible worldwide.



FEATURES

- Composite NTSC and RGBHV output
- Integrated command & control software
- Stand-alone remote control software
- DTMF remote control
- Built-in LAN and Modem
- PowerPoint™ autoplay & switching
- Line-in & Mic audio loop through
- Record and playback voice messages over video system
- Real-Time Live Voice-Over capable
- Record and playback alert tone signals
- GPI for external switcher triggering (example: MegaHertz 1x8 Base band switch)
- Capable of normal PC operations including web services, email, etc...
- Ruggedized and redundant internal cooling with integral air filtration
- Microsoft Windows2000 Pro™ based system for security and stability

ORDERING INFORMATION

Part #	Options
DEVIS	Keyboard, Monitor, Mouse, any commercially available software packages

APPLICATIONS

- Deployed or front-line locations requiring video based information dissemination
- Any television system with need to quickly relay alert, advice, or emergency information to a population
- Kiosk
- Dormitory, Barracks, Rec Center, Clubs, TV & Movie Shelters, Tent City, Command Post, Headquarters private or public information server
- Anyplace video information is needed, and real-time presentation switching is required

*****CAUTION*****

Unit is capable of operating on 110VAC to 240VAC, 60Hz/50Hz. Ensure you use only ground isolation main power cable as provided. Inadequate power grounding can result in equipment damage or destruction and could void warranty. Further, ensure your AC voltage supply socket is single-phase only at either 60Hz or 50Hz—400Hz and 3-phase power can damage or destroy the unit.

*******WARNING*******

Lethal operating voltages present at internal system power supply. Completely disconnect main power cord prior to opening cover or removing any panels. Appropriately trained personnel only should attempt any internal modifications, repairs, or service.

CONNECTIONS

DEVIS Rear Panel Overview

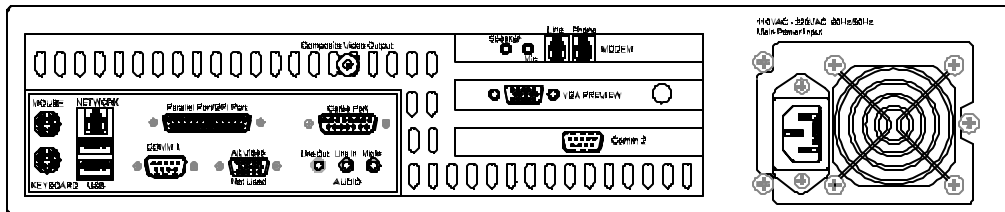


Figure 1

Standard PC Connections (refer to figure 1, 1A and 1B)(* = required connection for DEVIS normal operation—all other connections not marked with "*" are optional)

*MOUSE: Standard PS/2 style mouse

*KEYBOARD: Standard PS/2 style keyboard

USB: Universal Serial Bus (any number of add-in peripherals such as printer, mouse, keyboard)

*PARALLEL PORT/GPI PORT: Can be standard printer port—for DEVIS, connect 25-Pin GPI cable (included) for control of external switcher device

COMM 1: Standard RS-232 serial port

COMM 2: Standard RS-232 serial port

GAME PORT: Used for game controllers and some audio devices

*AUDIO LINE OUT: Connect with 1/4" Stereo plug to audio amplifier or switcher for audio broadcast over cable or broadcast television system. Required if you desire audio on-air capability.

*AUDIO LINE IN: Use 1/4" stereo plug to connect radio receiver, CD player, tape player, etc... to line-in to loop through external audio source over the video presentation (Background Music/Sound). This is the main audio input port for DEVIS operation. This is only required if you desire audio over your normal PowerPoint™ presentations. Commonly used for simply playing ambient audio during presentations.

*AUDIO MIC IN: Primary Voice Modem input for live real-time telephonic voice-over-video functions. Can serve as microphone input or secondary audio source input

*COMPOSITE VIDEO OUTPUT: BNC connector outputting standard NTSC base band composite video for use with BNC cables. This is main video output to be used in cable and broadcast video applications.

*MODEM: Connect your telephone line to the modem port labeled "LINE". This is mandatory for DTMF dial-up control of the DEVIS. If desired, you can connect a land-line telephone to the port labeled "PHONE", which will allow use of the telephone while DEVIS is not being communicated to—it is also handy to have a phone attached so you can hear the ring, giving you an indication that someone is dialing into the DEVIS. DEVIS will answer the phone after the first full ring. Connect a 1/4" stereo audio plug from the "speaker" jack to the sound card's MIC input (for real-time voice-over-video function).

*VGA PREVIEW: This is DEVIS' normal VGA-style connector. It is an industry standard High-Density 15pin connector, used to interface with any computer monitor. Video output of this connector is not meant for a television, as it is progressive scan component type video (as opposed to composite video on the BNC connector). This video output is referred to as RGBHV (Red Green Blue Horizontal Vertical (sync pulses)).

*NETWORK: This is a 10/100 Base-T LAN connector. Connect your DEVIS to your network via this port to allow for remote control of the device. If you have DEVIS connected this way, you will need to set your IP addresses in the device. Factory default for the IP Address is: 10.0.0.100, and may be used on many intranet installations.

If you must change the IP address in your DEVIS, contact IT trained personnel. See Appendix A for further information.

*110VAC – 220VAC: Standard 3-prong ground isolation main power connection. Connect with provided power cord to single-phase 60Hz/50Hz wall AC outlet. Custom cables for deployed benches and racks may be manufactured, but must comply with common electrical code for ground isolation plugs. Contact Civil Engineering or equivalent for special cable manufacture.

Connect this only when you are ready to run the unit, as it is set to “auto-power” (safety against power outages). As soon as you plug in the AC, the device will power-up, boot-up, and begin to run the software applications.

Figure 1A

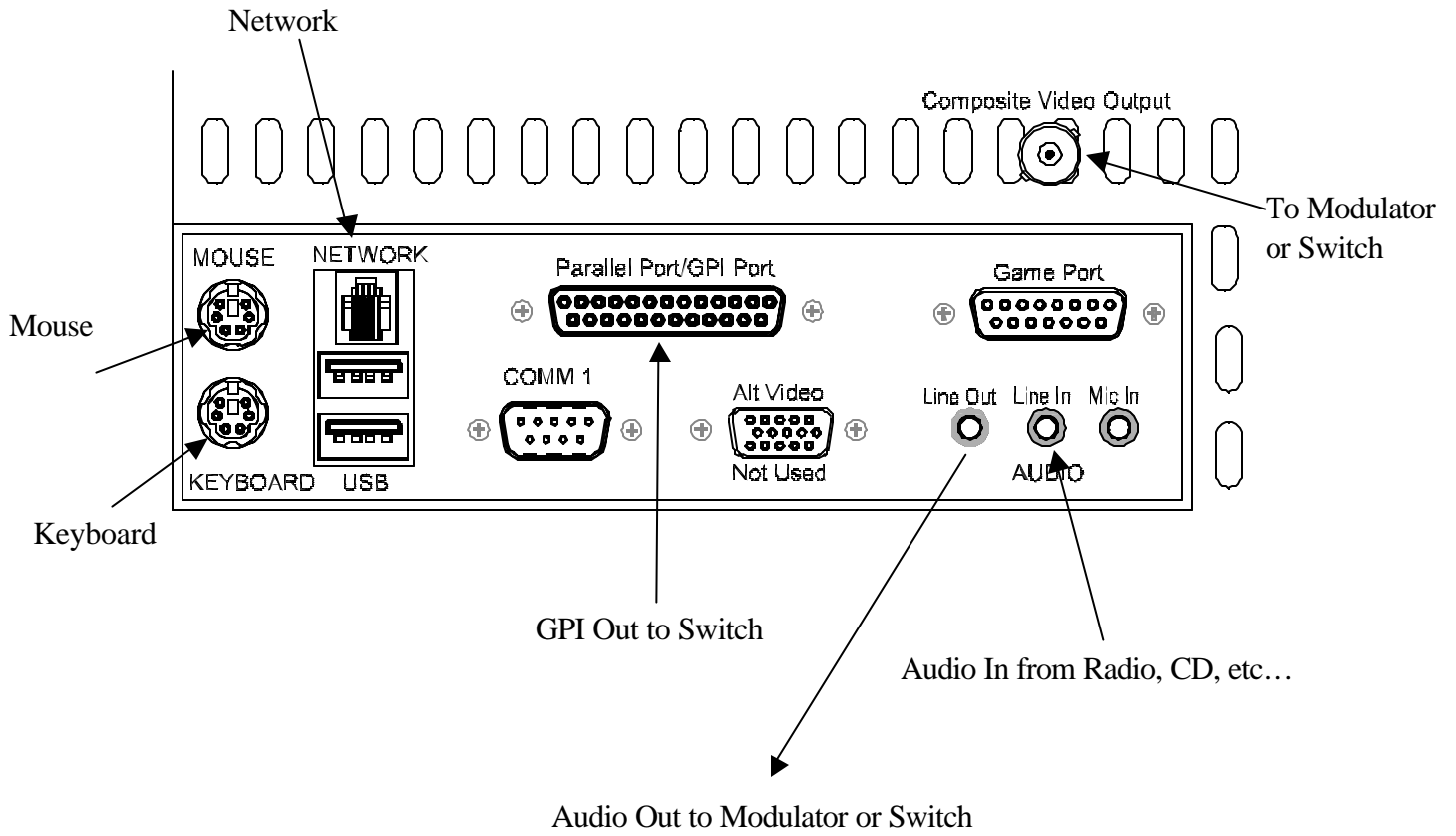
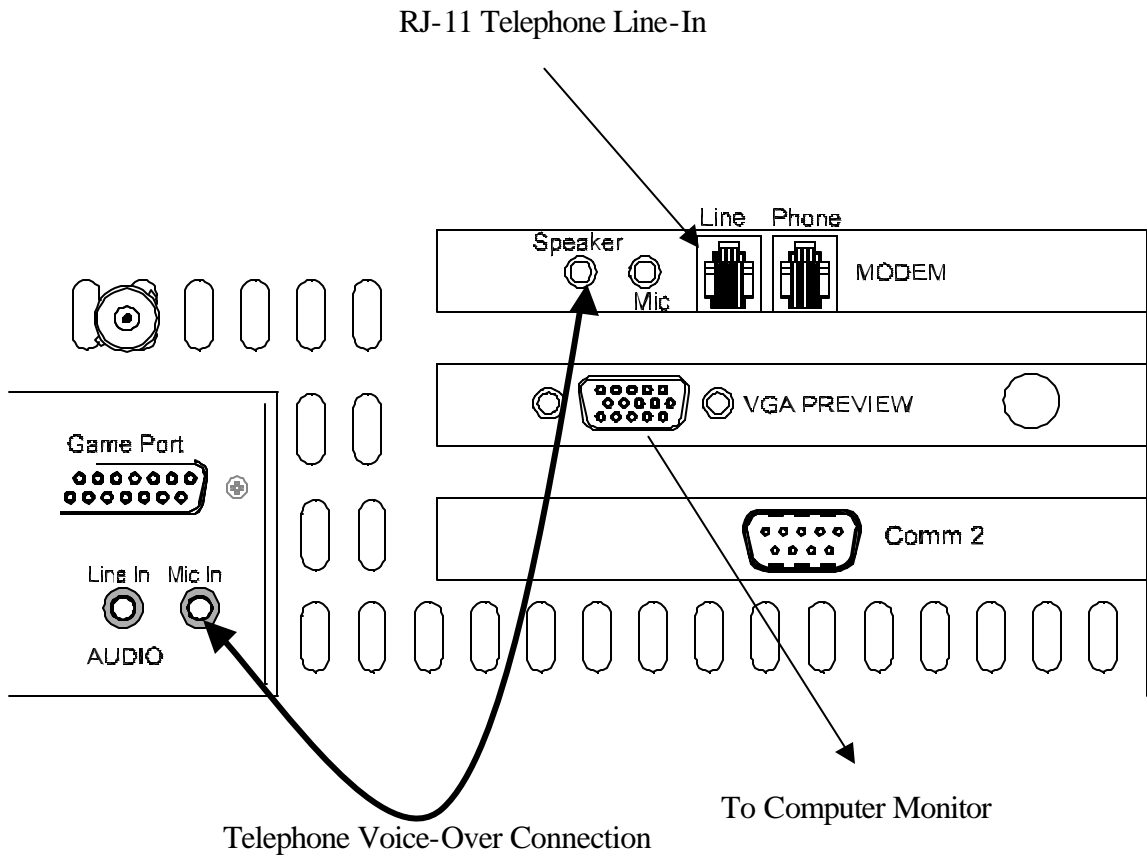


Figure 1B



DEVIS OPERATION

Should DEVIS be shut down through normal Windows™ means, you'll need to power the unit with the front panel momentary power switch. To do so, simply open the front door, press the power switch and release. You should hear the fans begin to run, and LED indicators on the front panel should illuminate.

The DEVIS control software will “auto-run” at boot up. After everything is initialized, you should see the main application form appear on your video monitors.

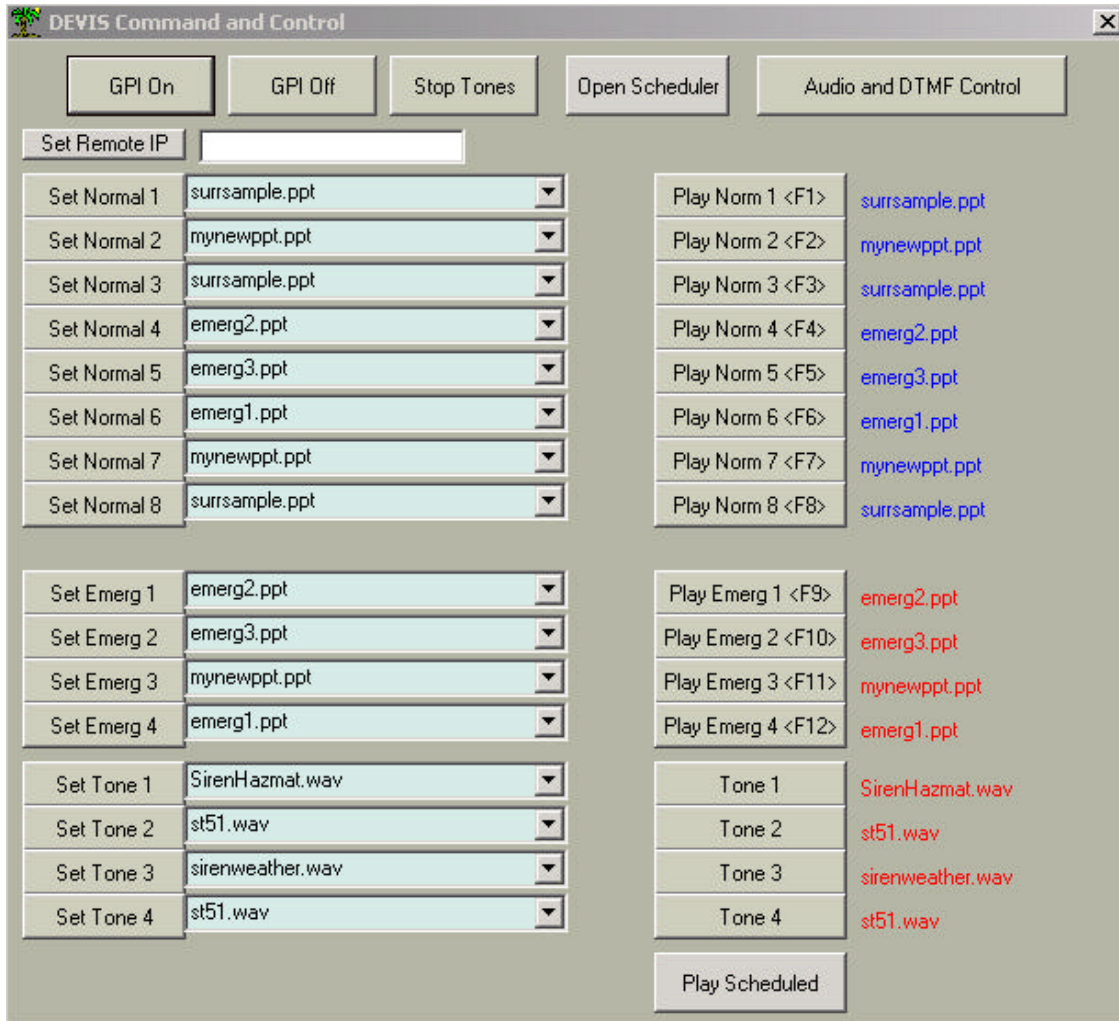


Figure 2

Out of the box, DEVIS has sample presentations and sample tones installed. These are the file names listed on the form in figure 2 and highlighted in figure 3.

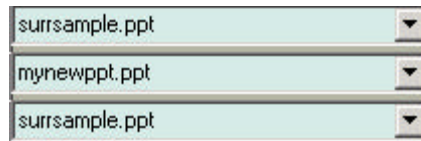


Figure 3

Create your presentations on any other PC as you would normally and import them into DEVIS. You will need to store them in the “C:\DEVISFOL\PRESENTATIONS” folder so that DEVIS can access them.

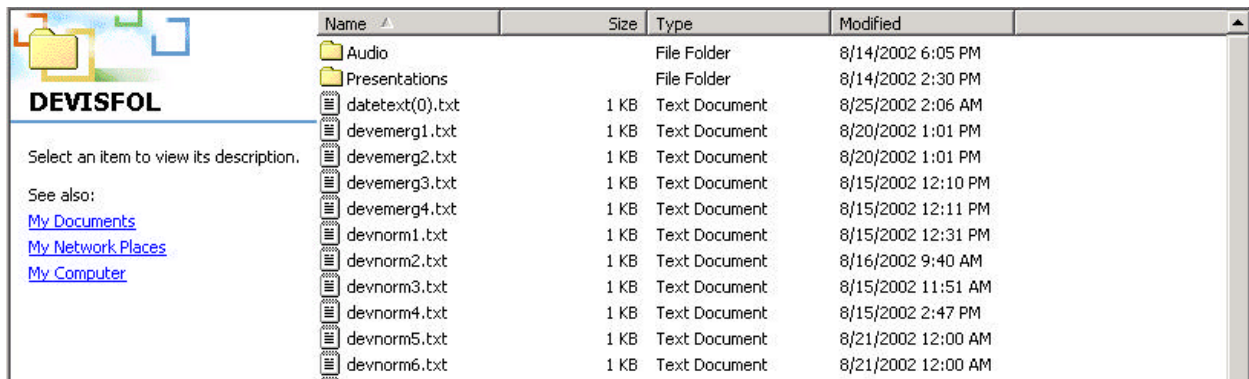


Figure 4

Access this folder now—you will see the sample presentations stored.



Figure 5

You can import presentations in multiple ways—CD, 3.5” Floppy, or via Network. When importing via network you will treat DEVIS as though it were any other computer on your network. Simply search for DEVIS from the originating PC, map it as any other computer on the network, and click & drag files as necessary.

STORE PRESENTATIONS ON DEVIS

Once you have presentations to store in DEVIS, locate the folder DEVISFOL on the DEVIS C:\ drive.

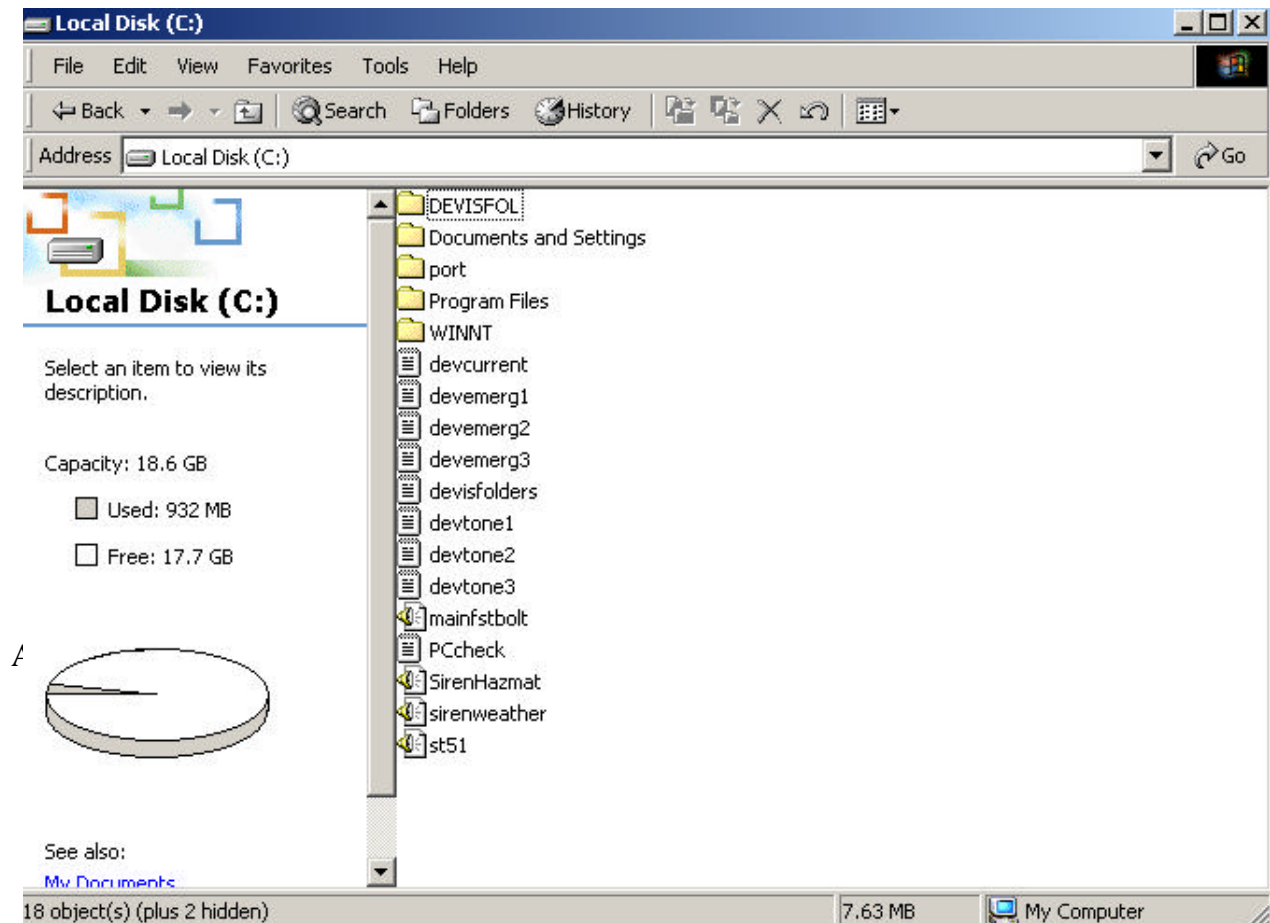


Figure 6

Double click on DEVISFOL to open it. There you will find two sub-folders, "AUDIO" and "PRESENTATIONS" (see FIGURE 4), as well as a number of text (.txt) files—DO NOT MOVE OR DELETE THE TEXT FILES—the text files are present to ensure storage of schedule and presentation log information should power loss occur. These text folders also ensure you can setup DEVIS at your home base, transport it to the deployed location, and have it function with all your settings moments after unpacking it.

Now, double-click on the "PRESENTATIONS" folder. When it opens, you will see all PowerPoint© presentations available to and stored in DEVIS (see FIGURE 5).

From this point you can open another explorer window, open your CD drive on DEVIS if you're importing from CD (D:\), or open your floppy drive (A:\), or open your mapped network computer that contains the files you are importing. Once you have located the presentations to import, left-click on them one time, and use the mouse to "drag" them to the DEVIS folder "C:\DEVISFOL\PRESENTATIONS".

You will now see in the presentations folder your new presentation has been added. It is now available for use by DEVIS. Remember, for DEVIS to use your presentations for normal or emergency display, they must be stored in DEVIS in the folder "C:\DEVISFOL\PRESENTATIONS". By the same token, if you want to remove a presentation from DEVIS use, simply remove it from the "PRESENTATIONS" folder. You can utilize the large unused portion of DEVIS's hard drive to store and archive old data, or simply delete as required.

Store your normal (non-emergency) and your emergency presentations in the "PRESENTATIONS" folder. You may store as many as you like in the folder, and declare through the software, which one is actually to play in which slot. DEVIS will allow you to use any presentation from the PRESENTATIONS folder for any normal or emergency slot. You can repeat presentations as often as you like, and you may choose to not use some of them at all.

This manual will cover how to select which presentation plays in which slot later.

STORE AND ACCESS TONES

Tones that can be used with emergency presentations, or as stand-alone warning tones, are stored and accessed from DEVIS's folder "C:\DEVISFOL\AUDIO" (FIGURE 7).

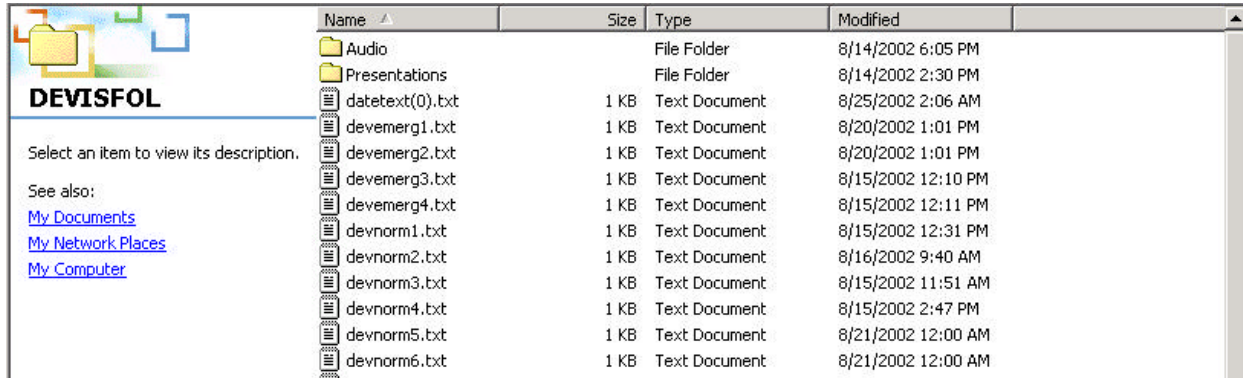


Figure 7

Double-click on the "AUDIO" folder—when it opens, you will see all wave (.wav) files that are stored in DEVIS for use (FIGURE 8).

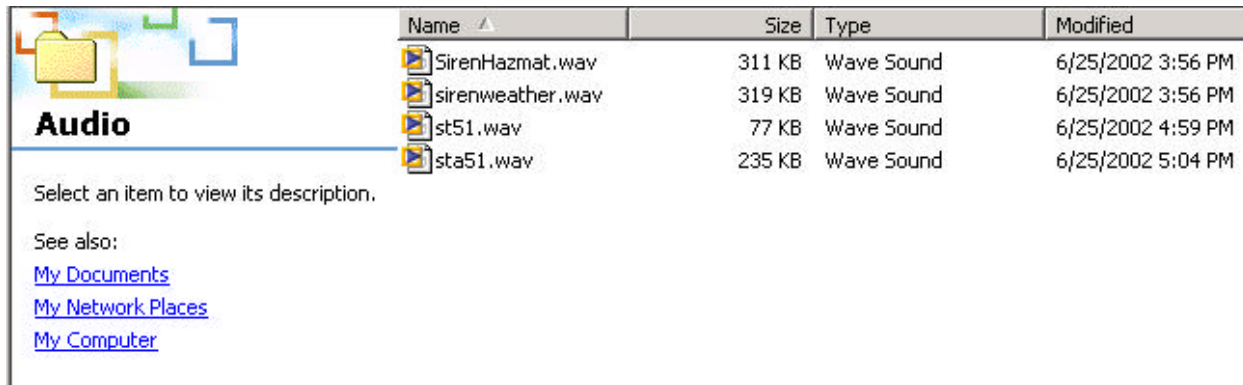


Figure 8

DEVIS v.2 utilizes only the .wav format for tones and recorded messages—NO OTHER AUDIO FORMATS are supported at this time. If you wish to create your own emergency tone files, simply store them on the C:\ drive by importing or creating right on DEVIS.

From this point you can open another explorer window, open your CD drive on DEVIS if you're importing from CD (D:\), or open your floppy drive (A:\), or open your mapped network computer that contains the files you are importing. Once you have located the audio files to import, left-click on them one time, and use the mouse to "drag" them to the DEVIS folder "C:\DEVISFOL\AUDIO".

You will now see in the audio folder your new .wav file has been added. It is now available for use by DEVIS. Remember, for DEVIS to use your audio files, they must be stored in DEVIS in the folder "C:\DEVISFOL\AUDIO". By the same token, if you want to remove a file from DEVIS use, simply remove it from the "AUDIO" folder. You can utilize the large unused portion of DEVIS's hard drive to store and archive old data, or simply delete as required.


You may store as many .wav files as you like in the folder, and declare through the software, which one is actually to play in which slot. You can repeat .wav files as often as you like, and you may choose to not use some of them at all.

This manual will cover how to select which audio file plays in which slot later.

INITIAL OPERATIONS

PLAYBACK TONES

Alert and emergency tones may be played immediately through DEVIS by simply clicking on the appropriate TONE button (1, 2, 3, or 4). DEVIS will play the .wav file you've selected one time. As shown, DEVIS comes with some sample tones pre-loaded. You may use these or replace them as desired.



Tone 1	SirenHazmat.wav
Tone 2	st51.wav
Tone 3	sirenweather.wav
Tone 4	st51.wav

Figure 9

If you wish to stop the Tone prior to its completion, simply click on the STOP TONE button (shown in figure 10).

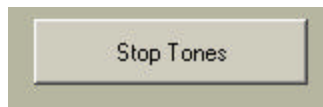


Figure 10

PLAYBACK PRESENTATIONS

To playback a presentation, simply click on the corresponding presentation button (FIGURE 11).



Figure 11

The presentation will continue to play until the “ESC” key is pressed on the keyboard.

Presentations may also be initiated via HOT KEYS (FIGURE 12).

Function Key	Presentation Played
F1	Normal 1
F2	Normal 2
F3	Normal 3
F4	Normal 4
F5	Normal 5
F6	Normal 6
F7	Normal 7
F8	Normal 8
F9	Emergency 1
F10	Emergency 2
F11	Emergency 3
F12	Emergency 4

Figure 12

REMEMBER: To stop the current presentation and start another, the “ESC” key must first be pressed.

SET PRESENTATIONS and TONES

You may assign presentations to any of the PLAY buttons, referred to as “SLOTS”, as well as assign .wav files to any of the TONE buttons.

NOTE: EMERGENCY 1 and TONE 1 are tied together, as are EMERGENCY 2 and TONE 2, EMERGENCY 3 and TONE 3, and EMERGENCY 4 and TONE 4. Anytime you select one of the EMERGENCY files to play, the corresponding TONE .wav file will also play. To avoid any .wav's playing, simply select blank .wav files for the assigned locations. TONES are intended for use with EMERGENCY presentations only.

To change which presentation is loaded for the particular slot, first ensure it's stored in the “C:\DEVISFOL\PRESENTATIONS” folder (See STORE AND ACCESS PRESENTATIONS).

The next step is to click on the down arrow to the right of any of the “SET” buttons to activate a drop down box for the selected presentation slot (FIGURE 13).

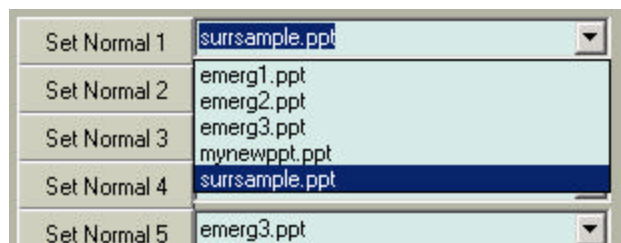


Figure 13

In FIGURE 13 example, we are setting Normal 1 slot. Clicking on the down-arrow to the right of the “Set Normal 1” button has activated a drop-down menu listing all of the available presentations—in our case there are 5 available presentations.

To select the presentation for the Normal 1 slot (and for any other slot you are wishing to set), click on the presentation name in the drop-down box (a single left mouse click is all that is necessary).

The presentation you clicked will now appear in the text box to the right of the “Set” button you are working with (FIGURE 14).

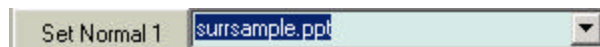


Figure 14

The next step, once you're satisfied with the presentation you've selected, is to click the "Set" button itself. When you click the "Set" button, the presentation will be loaded for the slot you are working on. Your indication that the setting is loaded properly is the file name that appears after the "Play" button for that slot will now correspond to the presentation you selected in the previous step (FIGURE 15).

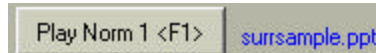


Figure 15

All 12 slots "Set" buttons shown in figure 16 operate in the same manner. When you've set the file, you'll see the loaded slot file name (as seen in figure 15) change to the new file you've selected. That is your indication that you are good to go to launch that file.

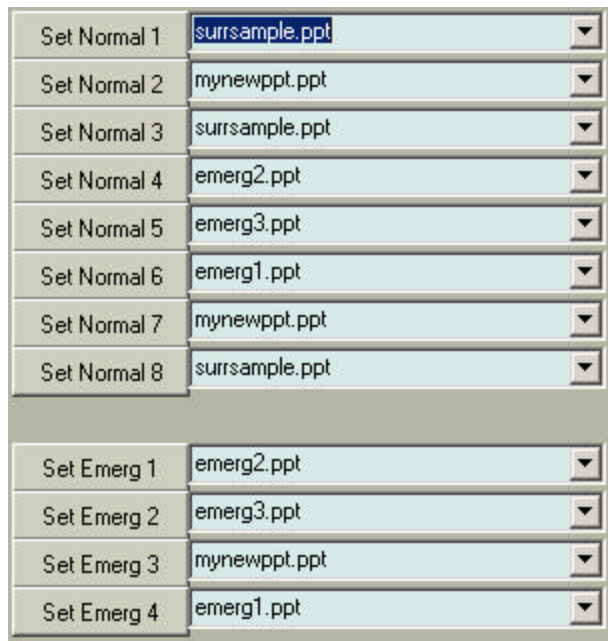


Figure 16

Note that we programmed our sample DEVIS with presentations repeating in some slots; we used presentations with "emerg" in the name as normal's; we used "normal" presentations as emergency slots—remember, all presentations in your "C:\DEVISFOL\PRESENTATIONS" are available for any slot and may be repeated as often as desired, or not used at all.

Also, note that a presentation in the “Set” text box does not become active for a slot until the “Set” button is pressed and the file name to the right of the “Play” button changes to correspond to your new selection (FIGURE 11).

Setting a tone to play in a certain emergency slot essentially has the same procedure to follow. The Tone slot “Set” buttons have drop down boxes, activated by the down-arrow to the right of the button (FIGURE 17). The difference here is that the drop-down box reads from the “C:\DEVISFOL\AUDIO” folder to find all available .wav files.

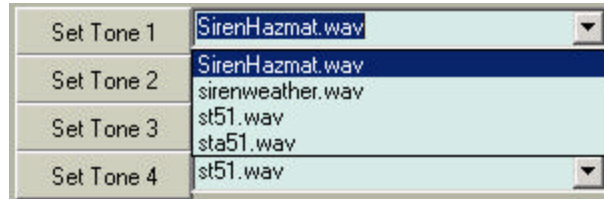


Figure 17

Following the same procedure as for presentations, click on the desired .wav file in the drop-down box. You will see the file you clicked now appear in the text box to the right of the “Set” button you are working on.

Remember again, this tone you’ve selected does not become active for that slot until you click the “Set” button and see the file name change to the right of the tone “Play” button (FIGURE 11).

Also, remember the Tone slots are hard-coded tied to Emergency slots. They can be played independently, but are set to only automatically play when an Emergency presentation has been activated.

GPI ON/OFF

The GPI trigger responds to which presentation is playing. GPI will be off if a Normal (non-emergency) slot is playing, and it will be on, if one of the EMERGENCY slots are playing.

Additionally, you may set GPI on and off manually by clicking the buttons shown in Figure 18.



Figure 18

The GPI's are used to trigger an external switcher device such as the MegaHertz 1x8 base-band video switch. This is to force all channels on your network over to the emergency presentation. Manual selection of the GPI will also force the switch to dump DEVIS video on all eight channels.

DEVIS will go through a self-test routine when first powered up—if your GPI cable is connected to DEVIS and the switcher, you will see the switch make several video source changes as the self-test procedure occurs. It is recommended that you do not connect the DEVIS GPI to the MegaHertz switcher until the DEVIS has completely booted up and is running. This will avoid annoying self-test screens being seen by the viewer.

TELEPHONY (DTMF) SETUP

DEVIS can be accessed and controlled via telephone, through DTMF. Dual-tone, Multi-Frequency refers to the touch-tones you hear when dialing a phone. DEVIS can start any of the presentations by entering tones from any U.S. type system land-line or cellular phone in the world, as long as DEVIS is connected to a phone line itself.

Click on the DTMF SETUP button on the DEVIS main screen (FIGURE 19).

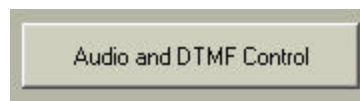


Figure 19

The DEVIS Audio and DTMF Setup and Control screen will open. Here you will find all the necessary controls to setup security passwords for dial-up, recording levels, playback levels, and voice-over (FIGURE 20).

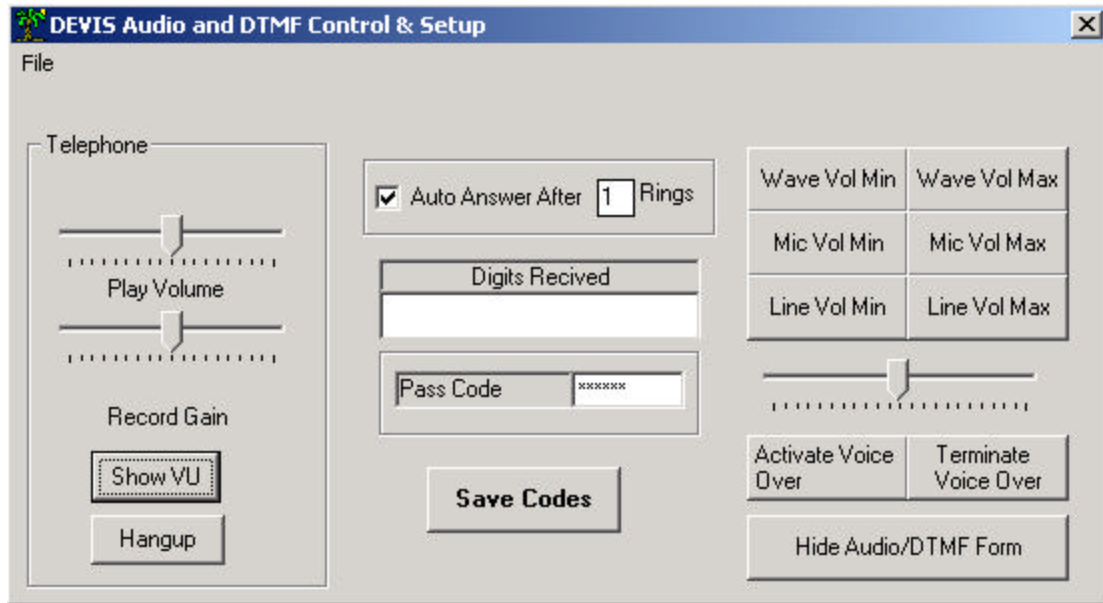


Figure 20

A highly valuable feature of DEVIS is DTMF capability. This function allows the properly authorized user to dial into the DEVIS from any standard telephone (be it land-line or cellular), that is capable of touch-tone, and activate functions remotely. The user may activate emergency presentation sequences, initiate normal sequences, record and playback a voice message over the television system, as well as initiate a live voice-over directly from his/her telephone over the television system—direct, real-time, live instructions via telephone over a cable television system of any size.

The first thing to setup when you access this page is the Pass Code. This is the code that is entered when prompted when you dial into a DEVIS unit. The preset factory Pass Code is “123456”. All pass codes must be 6 digits and must be numerical (consider it is to be entered via telephone by a user possibly under duress and no-doubt stress!).

To change the code, highlight the old code, or delete the old code (which appears as a set of asterisks only), and type in your new code. To store the code, click on "Save Codes" button (FIGURE 21).

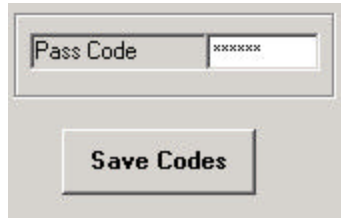


Figure 21

The preferences frame on the left side of the application is for the recorded phone message levels. Adjust the Play Volume slider to set the volume of the played back message. Adjust the Record Gain slider to control the level that a phone message is recorded. Factory defaults are set into the unit at shipment, and should not require changes in most applications (FIGURE 22).

The Show VU and Hang-up buttons are for troubleshooting only (FIGURE 22).



Figure 22

You may set the number of rings for DEVIS to wait prior to answering the phone line. It is set at a default of one ring. If you have a telephone looped through DEVIS, it may be desirable to change the number of rings (FIGURE 23).

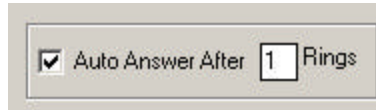


Figure 23

If AUTO ANSWER is de-selected (no check mark in the box), DEVIS will NOT answer the line. This should be left as default as shown.

To change the number of rings, highlight the number in the RINGS box, and type desired amount of rings.

The DTMF setup form will display activity on DEVIS. The “Digits Received” text box will display any touch-tones received by DEVIS. This box is for troubleshooting purposes only (FIGURE 24).



Figure 24

DIAL-UP CONTROL

Part of the unique feature set of DEVIS, is its ability to record a voice message via telephone, and play it back over the air, during a presentation, at the command of telephone touch tones. DEVIS can also play live voice from a telephone connection over the air. This is probably the function most used, while record and playback method may never be used—still the capability exists.

When you dial DEVIS, you will receive a set of voice prompts. Listen to the instructions to record, preview, and initiate playback of your voice file. Be sure you review your message before playing back over the air, as “what you say, is what you get”.

Figure 25 is the entire DTMF command quick reference guide.

DEVIS Telephone Control Quick Reference	
Dial	Result
11	Play Emergency 1
12	Play Emergency 2
13	Play Emergency 3
14	Play Emergency 4
21	Play Normal 1
22	Play Normal 2
23	Play Normal 3
24	Play Normal 4
25	Play Normal 5
26	Play Normal 6
27	Play Normal 7
28	Play Normal 8
77	Alert GPI On
88	Alert GPI Off
99	Voice Over ON (Hot Mic)
00	Voice Over Off
#1	Record Message
#2	Stop Recording
#3	Preview Message
#4	Stop Preview
#5	Play Message On Air
#6	Stop Playing Message
*****	Reset Digit Receiver
#####	Disconnect from Unit
	Passcode (6 Digit User Set)
	DEVIS Phone #
	DEVIS IP Address

Figure 25

When entering DTMF commands to DEVIS, each successful entry will be answered (or acknowledged (ack)) by DEVIS. You will hear a set of very fast touch-tones as an ack.

Wait for the voice prompts to end prior to attempting to enter any codes.

By following Figure 25, and the voice prompts from DEVIS, you can record a message for later playback by pressing “#” and “1”.

“#” and “2” will stop recording.

“#” and “3” will play the message back over the phone only (not over the air) for your preview.

“#” and “4” will stop the telephone preview.

“#” and “5” will play the recorded message over the air (directly over the television system).

“#” and “6” will stop the message from playing over the air.

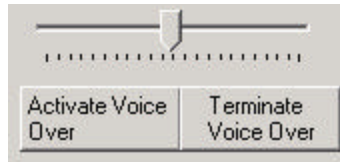
To activate the live voice-over feature, press “99”...you will hear the ack tones, and your telephone's microphone is now live over the television system. Ensure that strict open-line procedures are followed, as you are now “open-line” for the entire viewing and listening audience!

DEVIS will maintain this hot mic condition until you enter “00” on the telephone keypad—again you will hear an ack from DEVIS, and your telephone microphone is now closed to the television system. You may open and close the mic as much as necessary during your connection.

****WARNING****

ENSURE YOU HAVE COMPLETE CONTROL OVER THE DEVIS SYSTEM AND ITS SECURITY. LIVE VOICE-OVER FROM UNAUTHORIZED PERSONNEL COULD HAVE UNANTICIPATED SEVERE RAMIFICATIONS. UNINTENDED BROADCAST OF SENSITIVE MATERIAL COULD ALSO RESULT.

For testing and troubleshooting, the DTMF and AUDIO screen of the DEVIS software will allow you to set the volume of the playback, as well as activate and terminate voice-overs. The Terminate Voice Over button is of interest—should an unauthorized or accidental voice-over occur, a user can terminate it remotely or directly at the DEVIS unit with this button (FIGURE 26).



DTMF function also allows you to select a presentation to play as well as initiate an emergency presentation. Figure 25 lists the codes 11 – 14, and 21 – 28 used to initiate a presentation.

If at any time a wrong touch-tone button is pressed, or too many buttons are pressed, DEVIS may fail to respond to a command that you believe you've sent. This could happen for example, if a button were inadvertently pushed, and then you try to enter "11" for example. The DEVIS would ignore the "11" because the unwanted data was sitting in the buffer.

If at anytime you enter a listed command, and do not receive an ack back from DEVIS, enter six asterisks (* * * * *). This will clear the command buffer, and prepare DEVIS for a new command set. After entering the clear command, you will receive a buffer clear tone from DEVIS through your telephone earpiece. This clear ack is a different tone from the normal command ack, and consists of a wavering tone of 4 syllables.

When in doubt, clear the buffer!

To disconnect from DEVIS, enter six pounds (#####). DEVIS will immediately hang-up, and reset itself for another connection. If playing an emergency folder, DEVIS will continue to do so, as it will with any presentation it is currently running.

AUDIO

DEVIS utilizes three audio source formats. WAVE, MIC, and LINE. WAVE is any file played back internally in DEVIS, such as an EMERGENCY TONE, or recorded phone message.

MIC is used as the live voice-over connection. A direct connection to the modem's speaker out plug from DEVIS MIC input plug activates this feature.

LINE is used to playback continuous background music. For instance, if you have a set of normal presentations playing, and you use a radio receiver, or CD player, or similar to provide ambient background sound, you would connect it to DEVIS LINE IN plug.

For testing and troubleshooting purposes, the user has direct control over each source's volume, to maximize or minimize (FIGURE 27).



Figure 27

SCHEDULER

DEVIS v.2 has a scheduler function. This scheduler allows you to schedule any of the eight "Normal" slots to play on a given day of the week, or a given date (FIGURE 28).

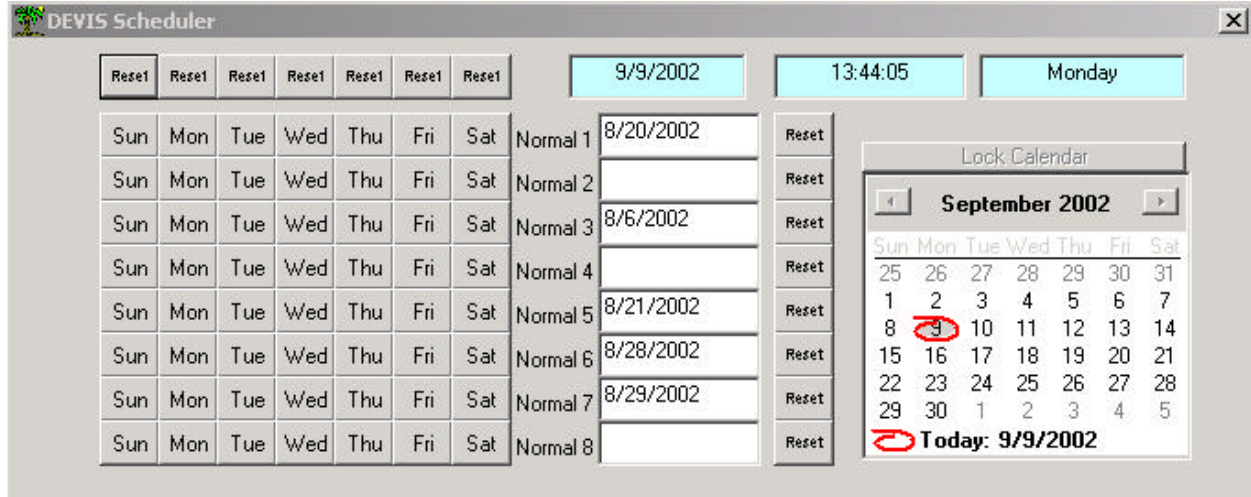


Figure 28

The scheduler works in conjunction with the main form, in that it plays Normal presentations at a given day/date. The scheduler however is not concerned with which presentation is in which slot—it is only going to command DEVIS to play Normal 1, regardless of what is assigned in that slot.

The grid of weekday names on the left side of the scheduler screen is used to choose a slot to play on a day.

For example, to choose slot Normal 1 to play on Sundays, click the Sun button in the Normal 1 row (Figure 29).

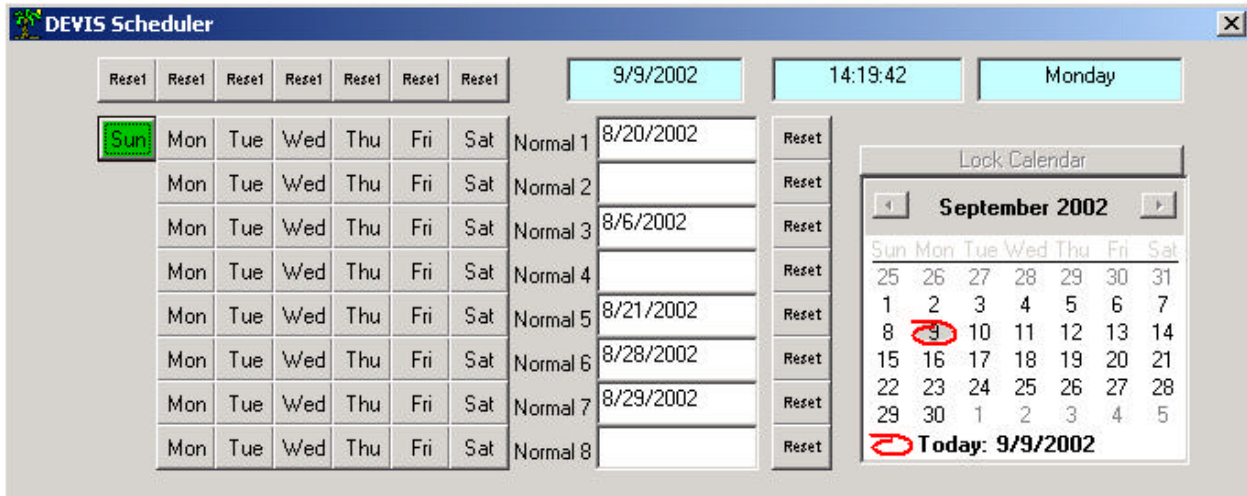


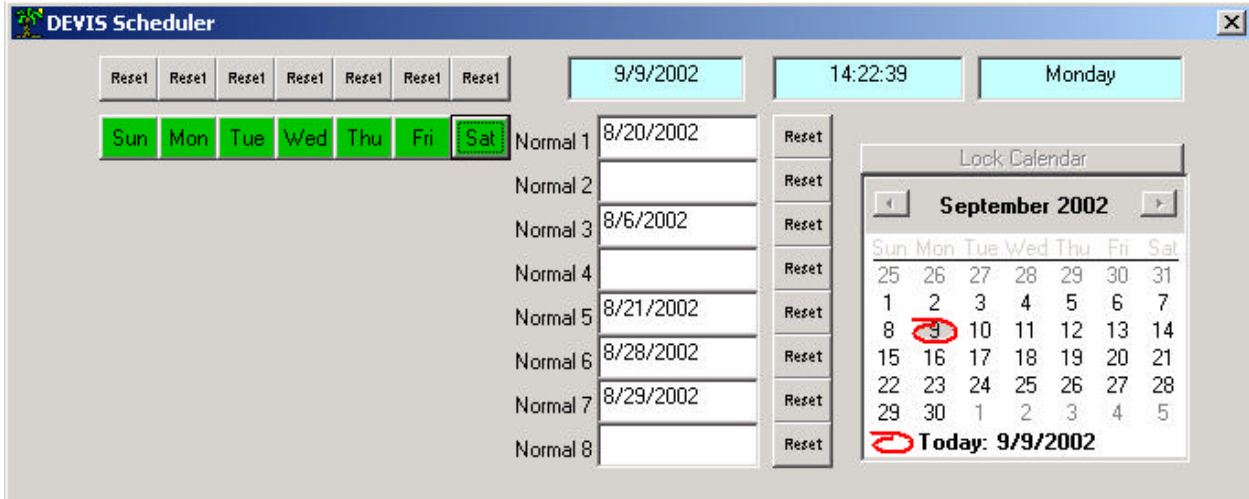
Figure 29

You will see that the “Sun” button in the Normal 1 row has illuminated green, and the remaining buttons in the “Sun” column have disappeared. This is to indicate that you’ve selected a presentation for Sunday, and since only one presentation can play at a time, on a given day, the rest of the column is blanked.

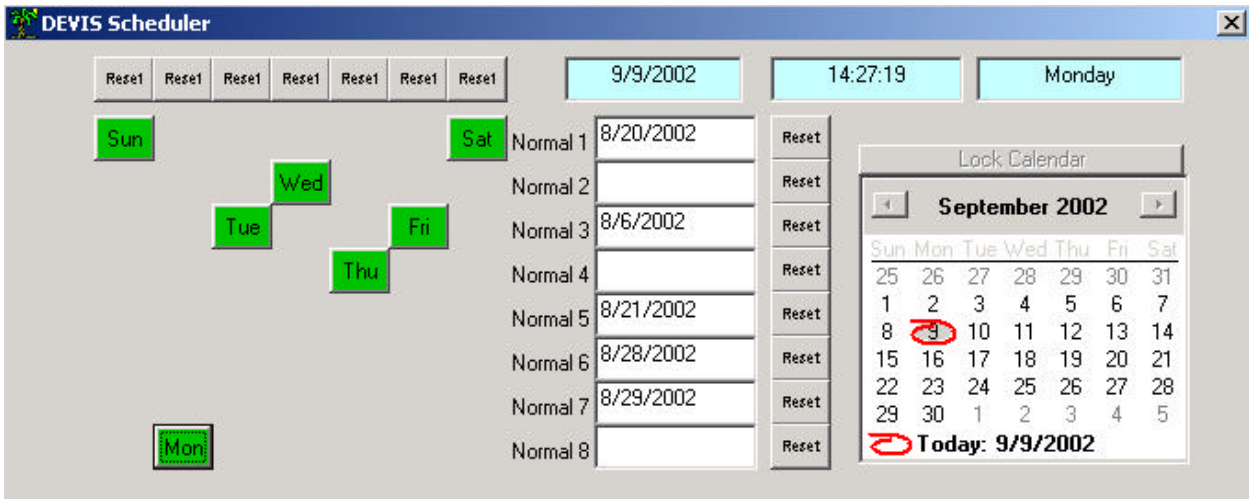
You can schedule all days to play a single presentation, or make any combination thereof...the only limitation is that only one presentation allowed per day (FIGURE 30).

DEVIS scheduling works as you would expect—at 0000 hrs. on any given day, the playing presentation switches over for the new day to what is loaded in the scheduler. If you should bring up a schedule, and program it any time during the day, and want to start the schedule, rather than having to wait till midnight for it to kick in, you can simply press the desired presentation Play slot on the main page, or press the Play Scheduled button on the main page.

Figure 30 is two samples of scheduling possibilities:



All Days to Play Normal 1



Random Presentations per Day

Figure 30

To reset any given day, click the RESET button above that day's column. Any illuminated green button for that day will extinguish (return to grey), and all rows for that day will reappear.

No scheduling information ever has to be entered. This function is only for your use and convenience.

The scheduler is also capable of playing a given slot on a specific date. To select this, click in the white text box to the right of the Normal # label. That text box will illuminate cyan, and the calendar to the right will become active (FIGURE 31).

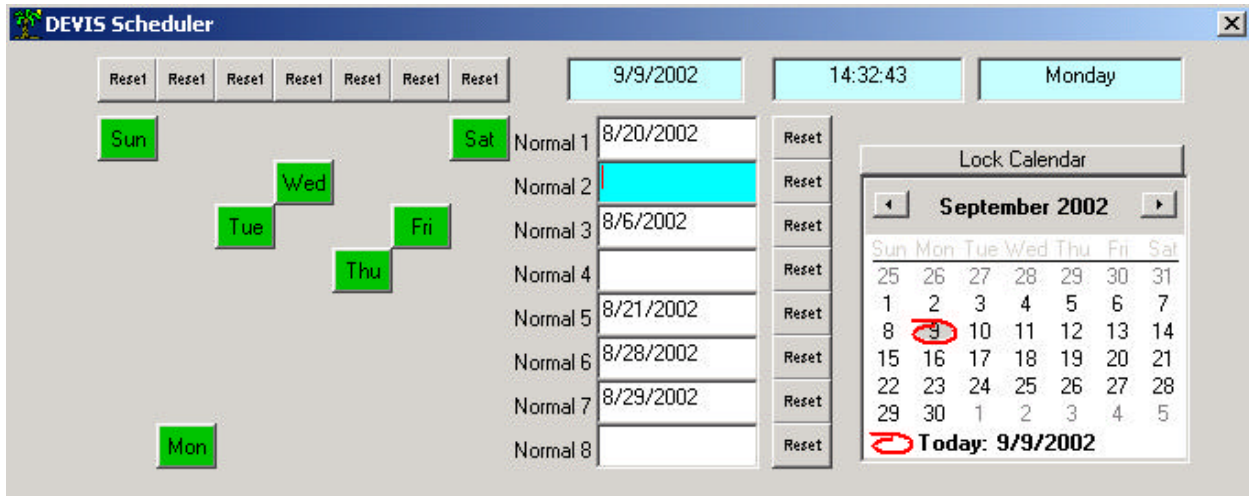


Figure 31

The next step is to click on the specific date you desire for that presentation slot to play by scrolling through, and clicking on the date on the calendar.

After you've selected that date, it should appear in the highlighted textbox. Click on "Lock Calendar" above the calendar to prevent inadvertent changes...at that point, you will notice the cyan illuminated text box return to white (FIGURE 32).

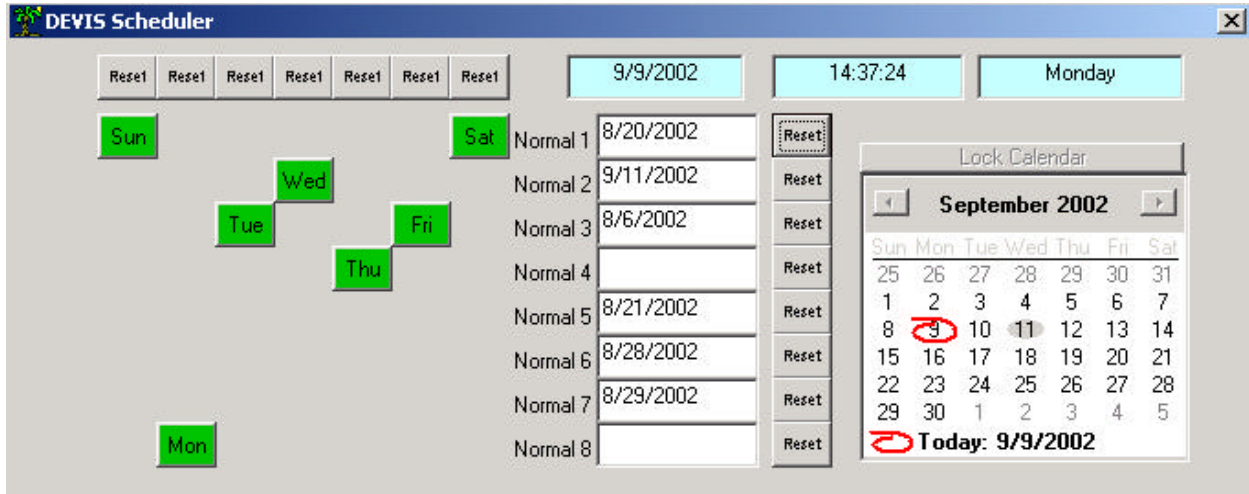


Figure 32

All scheduler information is automatically saved whenever you make an entry...and it is automatically overwritten when you make a new entry for the same slot. No save buttons are necessary.

One final note on the scheduler, the three cyan boxes at the top right are actual time, date, and day as set in your DEVIS. Verify that these are correct, and if not, change them to your location using the Windows© Time/Date Function.

To set the Windows© Time/Date Function, double-click on the clock that appears in the bottom right corner of your computer display (Figure 33).



Figure 33

That will bring up the Windows© Date/Time Properties form (Figure 34). Ensure you set the proper time, date, and time zone on this form for proper schedule operation in your deployed location.

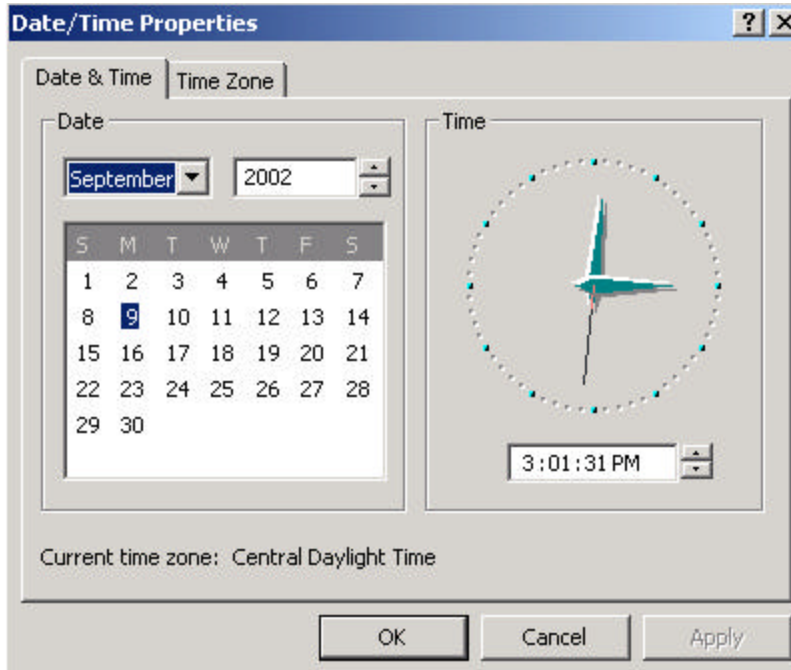


Figure 34

REMOTE CONTROL

DEVIS may be controlled remotely via Ethernet and therefore, from any Internet connection worldwide. This is supplemental to the DTMF control. The remote control application is included on CD with your unit.

Load the remote control software on any Internet or intranet connected PC. After a few configuration settings you will have the capability to issue alerts and warnings with a single click.

Prior to running the remote control software, ensure you have noted the IP number assigned to DEVIS at its installation.

After installing the Remote Control application, go ahead and run it... you will see the main screen first (FIGURE 35).



Figure 35

Step 1 is to enter the IP address of DEVIS in the block next to the DEVIS IP Address button. In the figure 35 example, the remote DEVIS player unit's IP is 10.0.0.88.

Now, to get full function, and to verify connection, click on "Get Slot Data From Player" button. If you have proper connection, you will see all the black text boxes to the right of the Play buttons fill in with the programmed slot data from the remote DEVIS player unit.

You can now click on any Play button, and start that slot running. You can change presentations on the fly by clicking another play button as desired.

Clicking these Play buttons will have the same effect as though you were right at your DEVIS unit clicking on its buttons. Emergency presentations will be accompanied with the appropriate tone; Normal presentations will play as normal.

At the top of the remote control application, there are several other functional buttons. GPI On and GPI Off work as the equivalent buttons on the DEVIS Player (FIGURE 36).

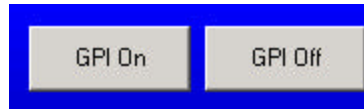


Figure 36

Click on GPI On to trigger an external device (such as the MegaHertz© 1x8 Base band Switcher) to switch all connected channels to your presentation channel.

Click on GPI Off to return the switcher, and all channels, back to their normal operating configuration.

Also at the top of the main form, are three “Stop” buttons (Figure 37).

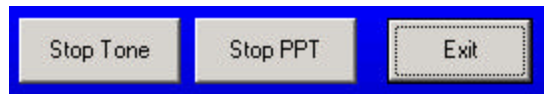


Figure 37

“Stop Tone” will cease any emergency tones that are playing on the DEVIS unit.

“Stop PPT” will stop any PowerPoint© Presentation that is playing on the DEVIS unit.

“Exit” will exit the remote control application.

The remote control application has three more buttons at the bottom right corner of the main screen (Figure 38).

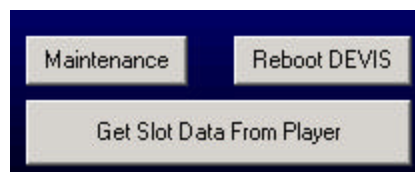


Figure 38

“Reboot DEVIS” button will reboot the remote DEVIS player. Utilize this button only as troubleshooting aid, if perhaps, your remote player has seemed to lock up, or stop responding.

The “Get Slot Data From Player” button we covered earlier in this section. That leaves the “Maintenance” button. This is where more advanced functions are carried out. Click on “Maintenance” button.

The maintenance screen, or PLAYER SCHEDULE screen will appear (FIGURE 39).

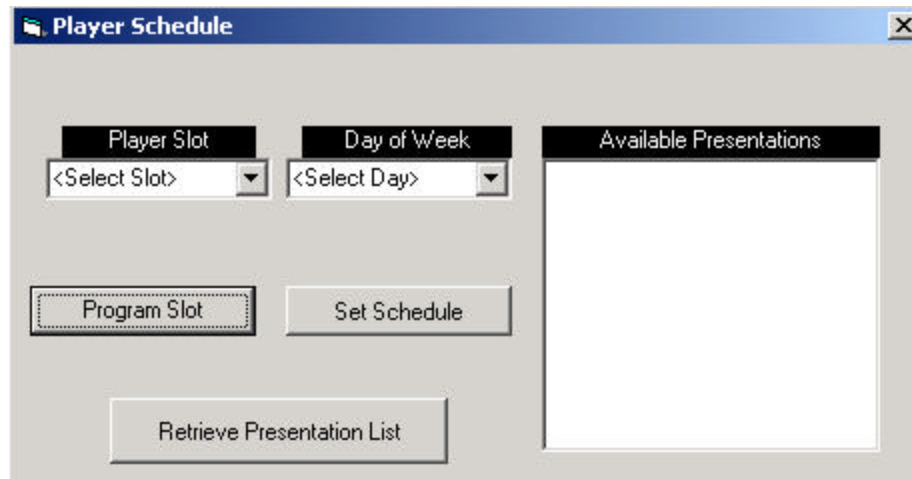


Figure 39

This simple, yet powerful screen will allow you to remotely reprogram your DEVIS player...so that you can change slot data and also change which presentation is scheduled to play on which day.

The first step is to click on “Retrieve Presentation List”. This will connect you to the remote player, and list in the large text box (labeled “Available Presentations”) all of the available PowerPoint© Presentations from your DEVIS player.

Once you have that list up, you can set out to reprogram DEVIS remotely. If you desire to change which presentation is assigned to a slot, click on the new presentation in the “Available Presentations” text box, and click on the down arrow under “Player Slot” (FIGURE 40).

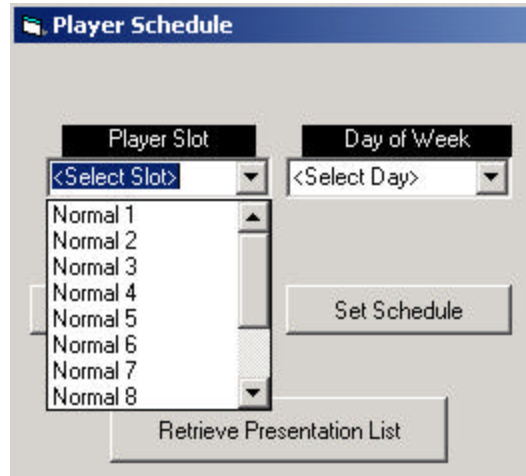


Figure 40

Once you have selected a presentation name, and a slot, you can click on the “Program Slot” button to send the new data to the DEVIS unit, where it will be automatically programmed (FIGURE 41).

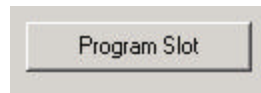


FIGURE 41

You can also change the day of the week a given slot plays (based on the Scheduler on the DEVIS player).

Click on the Player Slot down arrow, and select a slot (as seen in Figure 40). Then, click on the Day of Week down arrow (FIGURE 42).

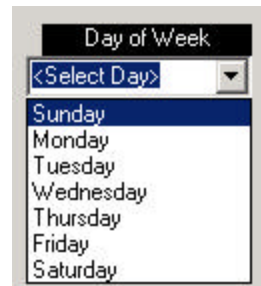


Figure 42

Now, you can click on the “Set Schedule” (FIGURE 43) button, and the data will be sent to the remote DEVIS player—the player will be automatically reprogrammed with your data.

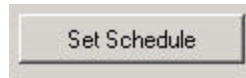
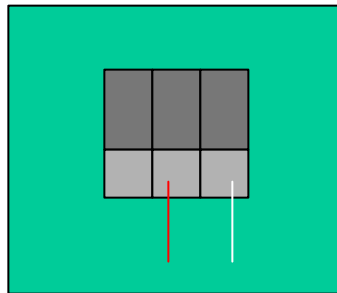


Figure 43

APPENDIX A

DEVIS audio connection to MegaHertz RF Generator

The audio input on the MegaHertz RF Generator is a 3-pin "Phoenix" type jack, similar to the one drawn below.



The audio jumper from the DEVIS sound card line out port connects to this connector as drawn. Do not connect the ground wire to anything. Only connect the red wire to the middle connection point and the white wire to the right side connection point as viewed from the rear of the unit.

Appendix A presented with much thanks to:

Bruce W. Bradley, Cox Communications, Wichita, Kansas

Thanks Bruce for all the hardwork and effort you put forth—your sweat will save others much time!

KEYWEST TECHNOLOGY LIMITED WARRANTY

KEYWEST TECHNOLOGY does hereby declare that the said product be covered under limited warranty for defective materials and workmanship. This warranty is extended to the original purchaser only, for the amount of time indicated below, effective from the original purchase date and subject to the following:

******THIS WARRANTY DOES NOT COVER******

- A. Products that have been subjected to abuse, accident, alteration, modification, tampering, negligence, misuse, or if repaired or attempted repair performed by anyone other than a service facility authorized to render such service, or if the model or serial number has been altered, tampered with, defaced, or removed
- B. Operational adjustments covered in this manual

WARRANTY PERIOD: 2 Years Parts & Labor

Cut and return the following page to register your product.

PRODUCT WARRANTY REGISTRATION

Complete and mail within 10 days of purchase

Purchaser's Name _____
 Title: _____ Phone: _____
 Company Name: _____
 Address: _____
 City: _____ State: _____ Zip: _____
 Purchased From: _____
 Comments: _____

PURCHASE DATE:

MO.

YR.

MODEL #

SERIAL #

PARTS

LABOR

		2 YRS.	2 YRS.
--	--	---------------	---------------

