

# Big VooDoo Black-Burst Generator

## Preliminary User's Guide

Please call Keywest Technology or email with any questions.

1-800-331-2019

email: [richl@keywesttechnology.com](mailto:richl@keywesttechnology.com)

Thank You

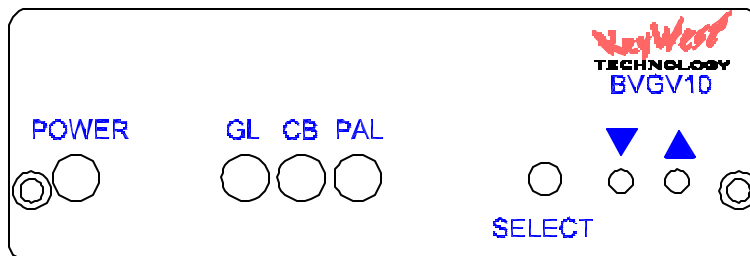
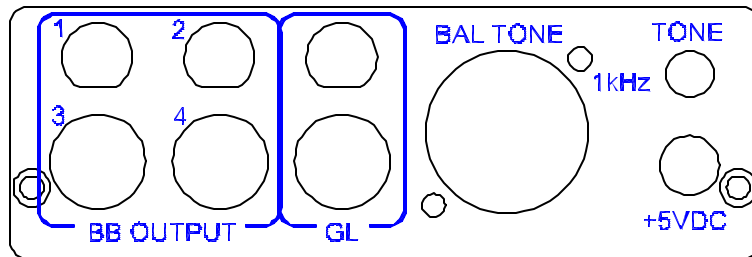
# Multi-Standard Analog 10-Bit Serial Black Burst Generator

The unit is designed as a low-cost, exceptional response, “broadcast quality” Black Burst and Tone Generator.

Operation is simple, however as a prototype, there are shortfalls in the unit markings that will be covered in operation notes.

## OPERATION NOTES



INPUTS/OUTPUTS:

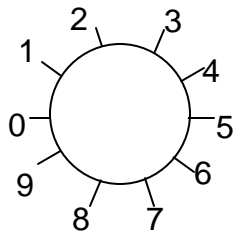


Indicators are as follows:

- ⓧⓧPOWER—Illuminates to indicate power-on state
- ⓧⓧGL—Illuminates when unit is in Genlock Mode
- ⓧⓧCB—Illuminates when unit is in Color Bar Mode
- ⓧⓧPAL—Illuminates to indicate PAL operation

Switch and Buttons are:

- ⓧⓧSELECT—a rotary BCD switch that selects modes of operation for the up and down push buttons. See drawing on last page for positions and functions
- ⓧⓧ--Increments values
- ⓧⓧ--Decrements values



Position 1—Color Bars On/Off—Toggle state by pressing up or down arrow buttons

Position 2—This position is currently not used

Position 3—Horizontal Phase Adjustment

Position 4— Sub-Carrier Phase Adjustment

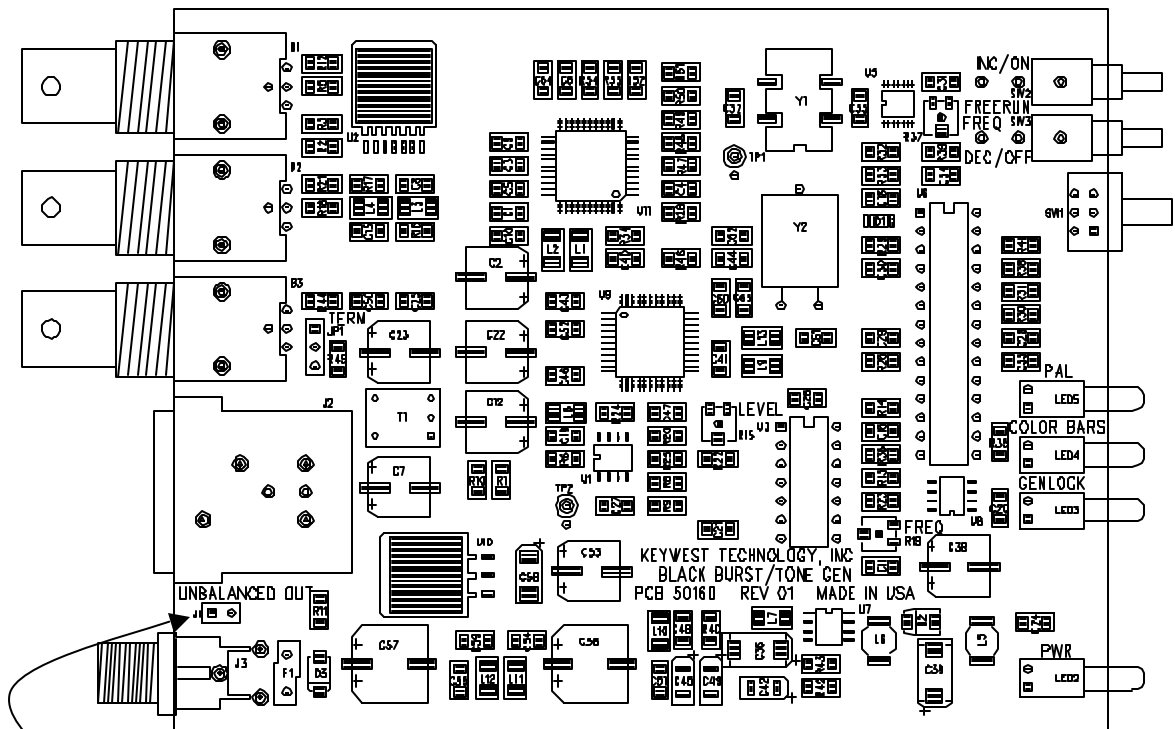
Position 5—Standard Select (PAL or NTSC)

Position 6-- This position is currently not used

Position 7—Pedestal On/Off

Position 8— This position is currently not used

Position 9—Genlock On/Off



If unbalanced tone out fails to operate, ensure panel connector is properly wired to the board at this location